



# Catalog



DigitalChina Networks

## Digital China Networks Limited

Addr: Digital Technical Plaza, No.9 Shangdi Ninth Street, Haidian District, Beijing, P.R. China

Zip: 100085

Tel: +86-10-82707033

Fax: +86-10-82705112

Email: [dcn\\_overseas@digitalchina.com](mailto:dcn_overseas@digitalchina.com)

Web: [www.DCNglobal.com](http://www.DCNglobal.com)



# Switch To New Generation

Digital China Networks Ltd., (hereinafter as DCN) is a professional telecom datacom device R&D and Manufacture corporation funded in 2001 by the biggest IT group in China, Digital China Ltd (HK861). After 10 years growth, DCN has been listed into the leading class of Telecom datacom equipments and solutions provider in Chinese market. Besides, DCN devices are also been deployed in over 50 countries ranged America, Europe and Asia.

Depending on comprehensive capabilities in product design, R&D, production, distribution and technical support, DCN focused on IP network products, simultaneously offers full range of network products, innovative solutions and expertise service for users with Ethernet Switch, Security gateway, Router, Wireless, VoIP, Tripre-play and other IP/Telecom devices. With over 10 years R&D experience and market expertise, DCN owned dozens of core technology patents and unique operation system platform DCNOS. Over 300 R&D staff are distributed their talent and creativity to promote DCN product advantage.

Holding "Building responsible, innovative and professional network corporation" as tenet, DCN can provide full range of product portfolio and various IP solutions to partner and end-customer. With continuous innovation and research, specified "Gigabit Link", "Easy Link", "Internet Link", "Broadband Link" and "Wireless Link", DCN IP solution can be deployed in various networks such as LAN, WAN, Wireless and Broadband. Besides, as the first Chinese manufacture passed IPv6 Ready Phase-II certification, DCN Switch products are leading the technical trend for the future IP networking.

Until now, thousands of customers involved from Education, Telecom, Healthcare, Industry, and Enterprise to Government and Military are benefiting from DCN solutions. Over 50 overseas customers located in North America, South Asia, Russia, Europe, Middle-East, are acting as DCN global Channel Agent and OEM Partner.

## R&D Strength

DCN R&D Center is formerly the Network Lab co-originated by Institute of Computing Technology, Chinese Academy of Sciences and Lenovo Corporate Research & Development. DCN R&D Center has established a consummate R&D framework consisting of hardware/software development, system evaluation and quality control, formed integrative product chain, and delivered a series of Ethernet Switch, Router, Multi-core Firewall and UTM, access management product, network management system and mobile data terminal. Almost 50 percent of DCN total employees are dedicated to R&D, which ensures abundant technology inventory and R&D force for self-made network products, and try the best to meet DCN customers' further demand in the market.

## Service And Training

Recognizing the need for users' benefit protection and customers' satisfaction improvement, DCN founded united customer service, technical support organizations and Digital China Networks College and formed standardized service quality, uniform training system to offer extensive services from technical support, training to maintenance. DCN Technology Institute is a kind of campus training center which is co-launched by DCN College and universities, institutes and other independent high educational organizations to initiate network technologies. With superior courses arrangement, reasonable teaching pattern and operational practice of DCN College, this cooperation presents a fresh training mode, trains IT interdisciplinary talent for employment market. At the same time, this institute issues authorized networking technology certificates DCSE to students who participate the study and pass the examination.

## Milestones

In 2001, according to a survey report of IDC, the port number of DC brand switches sold in natural year of 2000 ranked second in Chinese market with a sum of 1100000. And DCN was considered as a network products provider with the fastest growth in China by right of a season sales increase of 33 percent. In 2002, DCN launched the backbone routing switch, in 2003, constructed 3S network architecture. In 2004, under the theme of "distributed security, ordered management", DCN delivered her new products based on hierarchy application for enterprise networks. DCN took the lead in introducing D2SMP (Distributed Domain Security Management Policy), annotating a brand new technology proposition for new generation networks

In 2005, DCN timely advanced 3D-SMP (Dynamic Distributed Defense Security Management Policy) aiming at current network security actuality, which is a security solution having DCN Security Management Platform DC-GSM as the center and comprising DCFW-1800 series rewall, DCNIDS-1800 Intrusion Detection System(IDS), DCBI, 802.1x switches and 802.1x client.

July 2005, DC brand routing switches passed the IPv6 Ready Phase-1 Silver Authentication organized by international IPv6Forum. In Sep. of the same year, DC further passed the IPv6 Ready Phase II Gold Authentication, and became the first Chinese network manufacturer getting the honor.

Oct. 2006, DCN was invited by National Development and Reform Commission of P.R.C. as an industry-leading high-tech company in new generation internet networking field, to attend the 8th China High-Tech Fair. DCRS-7600 Series IPv6 10G Routing Switches was awarded Excellent Product Award in the fair.

Nov. 2007, DCN released Multi-cores Firewall and UTM, with new design structure, and high efficiency. With Next Generation Security Network Infrastructure, could be used in Carrier & Data Center, Large & Medium Enterprise, Medium Enterprise, SME and SOHO. In 2008 whole product line passed the Certificates of CE/FCC/RoHS to t for North-America, Europe and global market. MPLS VPN technology are deployed in the product line R&D and imbedded into DCNOS platform.

In 2009, DCN products had been deployed in over 50 countries and all continents except Africa, DCN year turnover are reaching close to 100 Million USD. Until now, DCN dedicated to "Switch to New Generation" mission, develop IPv6, MPLS and technology. Hope to grow with all our partners to benefit the global market!

# Table of Contents



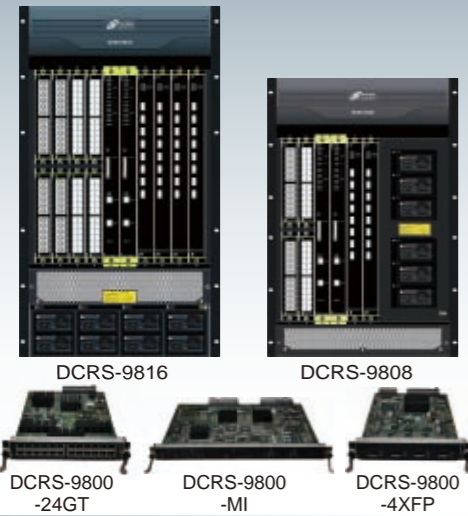
1. Company introduction		3. Security Gateway	
2. Etheriel Swttch		DCFW-1800E-10G	25
DCRS-9800 Series	1	DCFW-1800E-8G	26
DCRS-7600 Series	3	DCFW-1800E-4G	27
DCRS-5980 Series	5	DCFW-1800E-2G	28
DCRS-5960 Series	7	DCFW-1800E-V2	29
DCRS-5950 Series	9	DCFW-1800E-V2	30
DCRS-5750 Series	11	DCFW-1800S-H-V2	31
DCRS-5650 Series	13	DCFW-1800S-L-V3	32
DCRS-5200 Series	15		
DCS-4500 Series	17		
DCS-3950 Series	19		
DCS-3650 Series	21		



# Networking by DCN

## Interconnect Switches

### DCRS-9800 Series

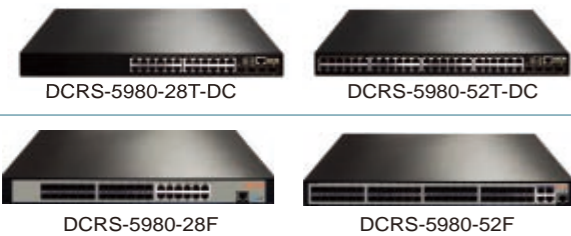


### DCRS-7600 Series



### Core Layer Chassis Switch

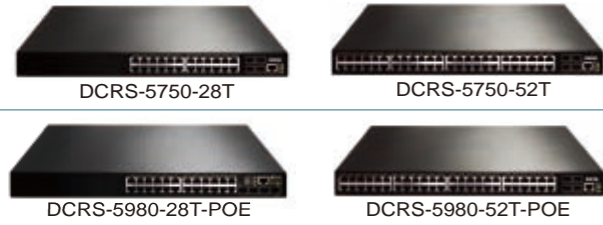
### DCRS-5980 Series



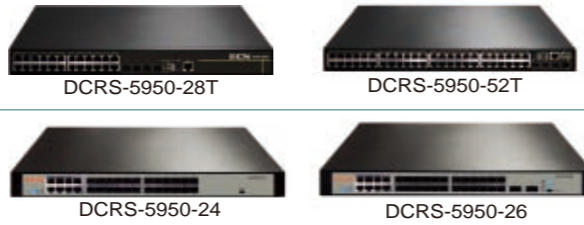
### DCRS-5960 Series



### DCRS-5750 Series



### DCRS-5950 Series



### Intelligent L3 GE Switch



### Intelligent L3 GE POE Switch

### DCRS-5650 Series



### DCRS-5200 Series



### Smart L3 FE Switch

### DCS-4500 Series



### Aggregation L2 GE Switch



### Aggregation L2 GE POE Switch

### DCRS-3950 Series



### DCRS-3650 Series



### Smart L2 FE Switch



### Smart L2 FE PoE Switch

### Universal Security Gateway

### Firewall

### Carrier&IDC



### Large&Medium Enterprise



### Medium&Small Enterprise



Digital China Networks Ltd

Addr: Digital Technical Plaza, No.9 Shangdi Ninth Street,  
Haidian District, Beijing, P.R. China

Zip: 100085

Web: www.DCNglobal.com

Fax: +86-82705112

Tel: +86-10-82705555

Email: dcn\_overseas@digitalchina.com



Abundant Products  
Advanced Technology

Ethernet Switch



# DCRS-9800

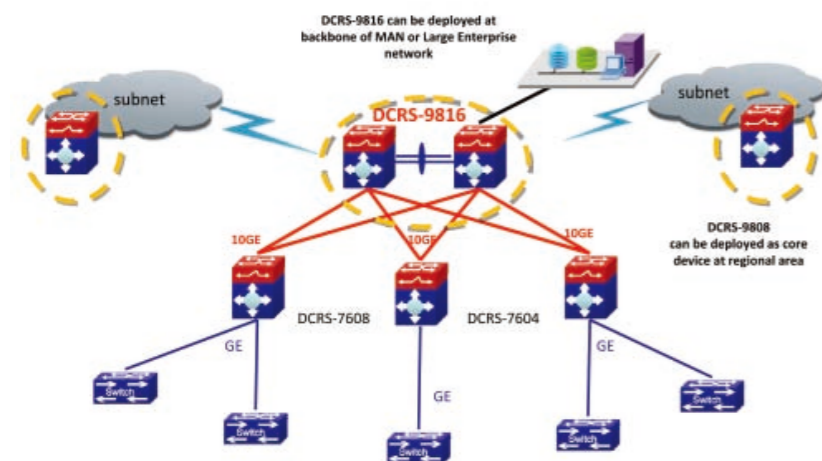
The DCRS-9800 series design for the carrier backbone network and Data center network market. The switch provides high performance forwarding ability with high 10GE port density. For many applications from end customers, the switch supports deploy L2 and L3 mpls vpn to construct more flexible carrier networks.

With the rich features and high performance and flexible ports, the products can be deployed to the following networks:



DCRS-9816

DCRS-9808



## Key Features and Benefits

- DCRS-9808 supports up to 192 \*10G ports or 192 Gigabit ports.
- DCRS-9816 supports up to 384 \*10G ports or 384 Gigabit ports.
- Flexible integrate long card and short card.
- Fully redundant system design and all components support hot swap.
- Green tech design and save power consumption.
- Abundant features for carrier, enterprise and campus network.
- High performance for applications and services.
- IPv4 and IPv6 dual stack certification Phase II.
- Dynamic routing protocol support such as RIP, OSPF, BGP, PBR etc.
- Support high availability features protect network and device safety.
- Multiservice features for different customers include VLAN, QOS, MPLS and VPLS etc.
- More security ability help customer construct more security network like MAC and 802.1X based AAA, radius and Tacacs+ support.
- Easy management network and device to support SNMP, TELNET, CLI, HTTPS etc.

## Specification

Items	DCRS-9808	DCRS-9816
Slot	2 MI slots 4 long business slots or 8 short business slots	2 MI slots 8 long business slots or 16 short business slots
Business Ports	10/100/1000BASE-T: MAX 192 1000Base-SX: MAX 192 1000Base-LX: MAX 192 10G: MAX 192	10/100/1000BASE-T: MAX 384 1000Base-SX: MAX 384 1000Base-LX: MAX 384 10G: MAX 384
Console	1	1
Performance		
Switching Capacity	768Gbps	1.54Tbps
Forwarding Rate	420Mpps	950Mpps
MAC Table	Max 256K	Max 512K
Routing Table	MAX 256K IPv4 or 128K IPv6	MAX 512K IPv4 or 256K IPv6
ACL Table	MAX 64K	MAX 128K
VLAN Table	max 4K	max 4K
L3 Interface	max 511	max 511
VRF Table	Max 512	Max 1K
Queues per port	8	8
Physical		
Dimension(W x D x H)	482.6x450x708.4 mm(16U)	482.6x450x841.7 mm(19U)
Relative Humidity	10%~90%, non-condensing	
Operating Temperature	0°C~40°C	
Power	AC: Input 200~240V, 50~60 Hz; DC: Input -36V~ -72V	AC: Input 90~260V, 50~60 Hz; DC: Input -36V~ -72V:
Power Consumption	≤1200W	≤1800W
EMC safety	FCC, CE, RoHS	FCC, CE, RoHS



# DCRS-7600

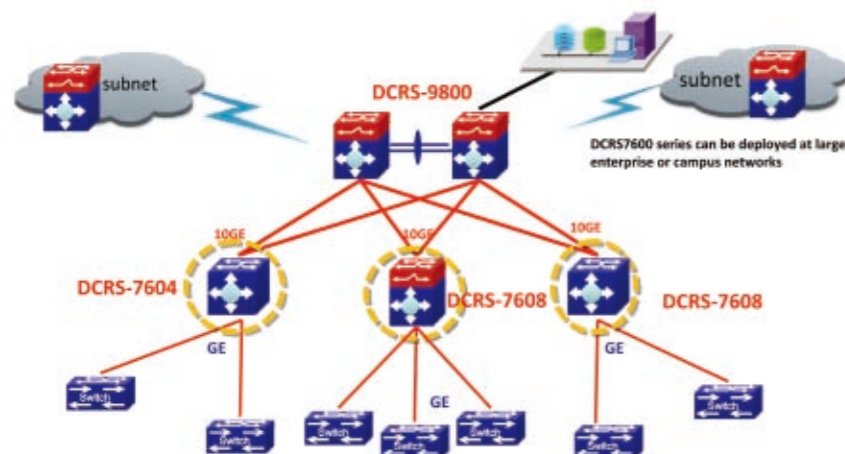
The DCRS-9800 series design for the carrier backbone network and Data center network market. The switch provides high performance forwarding ability with high 10GE port density. For many applications from end customers, the switch supports deploy L2 and L3 mpls vpn to construct more flexible carrier networks.

With the rich features and high performance and flexible ports, the products can be deployed to the following networks



DCRS-7608

DCRS-7604



## Key Features and Benefits

- DCRS-7604 supports up to 13 \*10G ports or 188 Gigabit ports.
- DCRS-7608 supports up to 32 \*10G ports or 384 Gigabit ports.
- Fully redundant system design and all components support hot swap.
- Flexible GE/10GE ports and slots combination.
- Lower power consumption to save energy sources.
- Abundant features for carrier, enterprise and campus network.
- IPv4 and IPv6 dual stack certification Phase II.
- Dynamic routing protocol support such as RIP, OSPF, BGP, PBR etc.
- Support high availability features protect network and device safety.
- Multiservice features for different customers include VLAN, QOS, MPLS and VPLS etc.
- More security ability help customer construct more security network like MAC and 802.1X based AAA, radius and Tacacs+ support.
- Easy management network and device to support SNMP, TELNET, CLI, HTTPS etc.

## Specification

Items	DCRS-7604	DCRS-7608
Slot	4	10
Business Ports	10/100/1000BASE-T: MAX 188 1000Base-SX: MAX 188 1000Base-LX: MAX 188 10G: MAX 13	10/100/1000BASE-T: MAX 384 1000Base-SX: MAX 384 1000Base-LX: MAX 384 10G: MAX 32
Console	1	1
Performance		
Switching Capacity	160Gbps	320Gbps
Forwarding Rate	119Mpps	238Mpps
MAC Table	Max 64K	Max 128K
Routing Table	MAX 128K IPv4 or 64K IPv6	MAX 256K IPv4 or 128K IPv6
ACL Table	Max16K	Max 32K
VLAN Table	max4K	max 4K
L3 Interface	max 511	max 511
VRF Table	Max 512	Max 512
Queues per port	8	8
Physical		
Dimension(W x D x H)	445mm*421mm*266mm(9.5U)	436mm*478mm*797mm(18U)
Relative Humidity	10%~90%, non-condensing	
Operating Temperature	0°C~40°C	
Power	AC: Input 200~240V, 50~60 Hz; DC: Input -36V~ -72V, Output 12V/25A, 5V/10A	AC: Input 90~260V, 50~60 Hz; DC: Input -36V~ -72V; Output 12V/25A, 5V/10A
Power Consumption	≤400W	≤1200W
EMC safety	FCC, CE, RoHS	FCC, CE, RoHS

# DCRS-5980

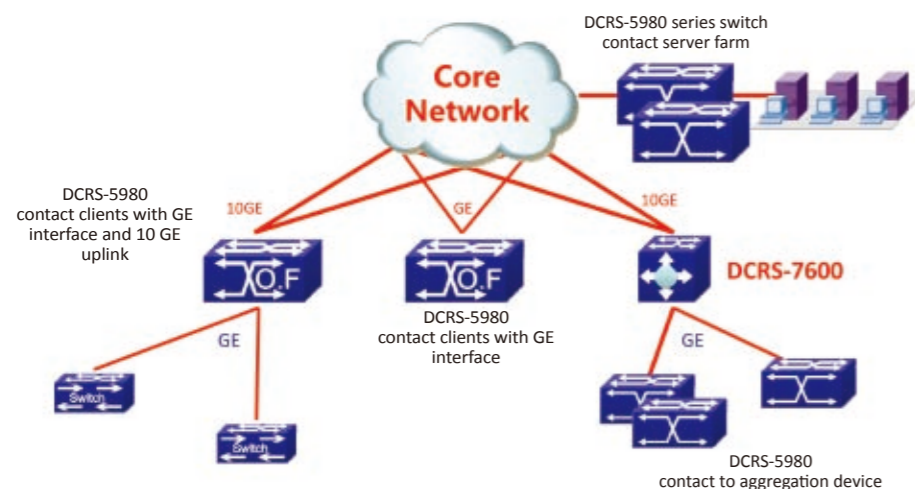
The DCRS-5980 series design for the carrier and enterprise service aggregation and campus core network. The switch provides max 4 10GE ports to construct more scalable network. The product support MPLS CE functions and work with DCRS-9800 and DCRS-7600 series core switch to construct large scale MPLS service network.

The DCRS-5980-POE series switch can support POE and work with WIFI AC, IP phone, IP camera and other POE PD device.

With the rich features and high performance and flexible ports, the products can be deployed to the following networks:



DCRS-5980-28F      DCRS-5980-28F  
DCRS-5980-28T-POE      DCRS-5980-52T-POE



## Key Features and Benefits

- DCRS-5980 series supports up to 4 \*10G ports and 24/48 Gigabit ports.
- DCRS-5980-POE series supports max 24 or 48 POE port and max power is 15.4W.
- Carrier class redundant power supplies provide high availability.
- Flexible speed fan and power management save the energy source.
- High performance and high port density protect customer investment.
- Abundant features for carrier, enterprise and campus network.
- IPv4 and IPv6 dual stack certification Phase II.
- Dynamic routing protocol support such as RIP, OSPF, BGP, PBR etc.
- Support high availability features protect network and device safety.
- Multiservice features for different customers include VLAN, QOS and MPLS CE etc.
- More security ability help customer construct more security network like MAC and 802.1X based AAA, radius and Tacacs+ support.
- Easy management network and device to support SNMP, TELNET, CLI, HTTPS etc.

## Specification

Attributes	DCRS-5980-28T-POE	DCRS-5980-52T-POE	DCRS-5980-28T	DCRS-5980-52T	DCRS-5980-28F	DCRS-5980-52F
Ports	20*10/100/1000 Ethernet Ports with 4xCOMBO (SFP/GT) 2 slots and max 4 10GE,	44*10/100/1000 Ethernet Ports with 4xCOMBO (SFP/GT) 2 slots and max 4 10GE,	20*10/100/1000 Ethernet Ports, 4xCOMBO (SFP/GT) 2 slots and max 4 10GE,	44*10/100/1000 Ethernet Ports with 4xCOMBO (SFP/GT) 2 slots and max 4 10GE,	12*GE COMBO (SFP/GT) Ports, 12x GE SFP 2 slots and max 4 10GE,	44* GE SFP Ports 4xCOMBO (SFP/GT) 2 slots and max 4 10GE,
<b>Performance</b>						
Switching Capability	128Gbps	176Gbps	128Gbps	176Gbps	128Gbps	176Gbps
Throughput	96Mbps	131Mbps	96Mbps	131Mbps	96Mbps	131Mbps
MAC Address	Max 32K	Max 32K	Max 32K	Max 32K	Max 16K	Max 16K
VLAN Table	max 4K	max 4K	max 4K	max 4K	max 4K	max 4K
ACL TABLE	max 4K	max 4K	max 4K	max 4K	max 2K	max 2K
Routing Table	Max 12k	Max 12k	Max 12k	Max 12k	Max 13k	Max 13k
L3 Interface	max 511	max 511	max 511	max 511	max 511	max 511
VRF interface	Max 32	Max 32	Max 32	Max 32	Max 32	Max 32
Port Queues	8	8	8	8	8	8
POE ports	24	48	NA	NA	NA	NA
<b>Physical Info</b>						
Dimension (WHD)	415mm×44mm×325mm	415mm×44mm×325mm	415mm×44mm×325mm	415mm×44mm×325mm	415mm×44mm×325mm	415mm×44mm×325mm
Relative Humidity	5% ~ 90%, non-condensing	5% ~ 90%, non-condensing	5% ~ 90%, non-condensing	5% ~ 90%, non-condensing	5% ~ 90%, non-condensing	5% ~ 90%, non-condensing
Operating Temperature	0℃ ~ 50℃	0℃ ~ 50℃	0℃ ~ 50℃	0℃ ~ 50℃	0℃ ~ 50℃	0℃ ~ 50℃
Storage Temperature	-40℃ ~ 70℃	-40℃ ~ 70℃	-40℃ ~ 70℃	-40℃ ~ 70℃	-40℃ ~ 70℃	-40℃ ~ 70℃
Power	AC: 90- 264V, 47-63Hz DC: -40--60V	AC: 90- 264V, 47-63Hz DC: -40--60V	AC: 100-240V, 50-60Hz DC: RPS	AC: 100-240V, 50-60Hz DC: RPS	AC: 100-240V, 50-60Hz DC: RPS	AC: 100-240V, 50-60Hz DC: RPS
Power Consumption	130W only for device 15.4W per port	180W only for device 15.4W per port	130W	180W	130W	180W
EMC safety	FCC, CE, RoHS	FCC, CE, RoHS	FCC, CE, RoHS	FCC, CE, RoHS	FCC, CE, RoHS	FCC, CE, RoHS

# DCRS-5960

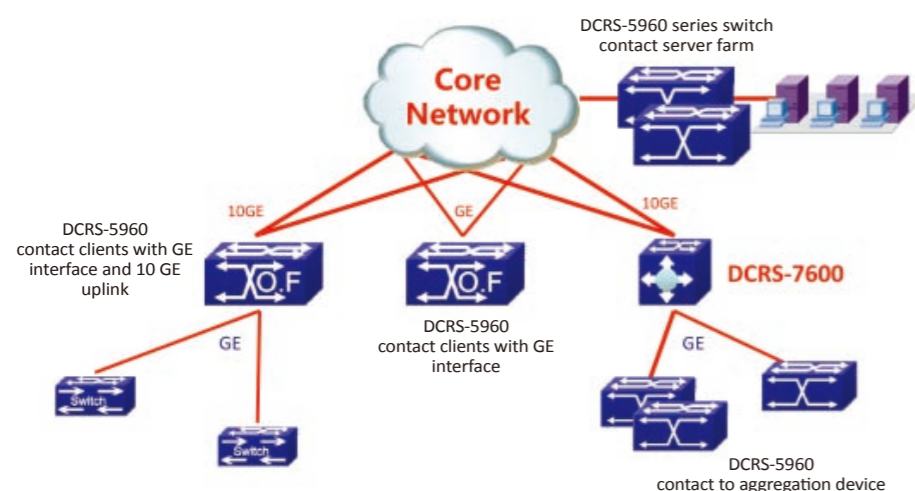
The DCRS-5960 series design for the carrier and enterprise service aggregation and campus core network. The switch provides max 4 10GE ports to construct more scalable network.

The DCRS-5960-POE series switch can support POE and work with WIFI AC, IP phone, IP camera and other POE PD device.

With the rich features and high performance and flexible ports, the products can be deployed to the following networks:



DCRS-5960-28T/28T-POE  
DCRS-5960-52T/52T-POE



## Key Features and Benefits

- DCRS-5960 series supports up to 4 \*10G ports and 24/48 Gigabit ports.
- DCRS-5960-POE series supports max 24 or 48 POE port and max power is 15.4W.
- Carrier class redundant power supplies provide high availability.
- Flexible speed fan and power management save the energy source.
- High performance and high port density protect customer investment.
- Abundant features for carrier, enterprise and campus network.
- IPv4 and IPv6 dual stack certification Phase II.
- Dynamic routing protocol support such as RIP, OSPF, BGP, PBR etc.
- Support high availability features protect network and device safety.
- Multiservice features for different customers include VLAN, QOS etc.
- More security ability help customer construct more security network like MAC and 802.1X based AAA, radius and Tacacs+ support.
- Easy management network and device to support SNMP, TELNET, CLI, HTTPS etc.

# Specification

Attributes	DCRS-5960-28T-POE	DCRS-5960-52T-POE	DCRS-5960-28T	DCRS-5960-52T
Ports	20*10/100 /1000 Ethernet Ports with 4xCOMBO (SFP/GT) 2 slots and max 4 10GE,	44*10/100/1000 Ethernet Ports 4xCOMBO (SFP/GT) 2 slots and max 4 10GE,	20*10/100 /1000 Ethernet Ports, 4xCOMBO (SFP/GT) 2 slots and max 4 10GE,	44*10/100/1000 Ethernet Ports 4xCOMBO (SFP/GT) 2 slots and max 4 10GE,
Performance				
Switching Capability	128Gbps	176Gbps	128Gbps	176Gbps
Throughput	96Mbps	131Mbps	96Mbps	131Mbps
MAC Address	Max 8K	Max 8K	Max 8K	Max 8K
VLAN Table	max 4K	max 4K	max 4K	max 4K
ACL TABLE	Max 1k	Max 1k	Max 1k	Max 1k
Routing Table	Max 512	Max 512	Max 512	Max 512
L3 Interface	max 511	max 511	max 511	max 511
Port Queues	8	8	8	8
POE ports	24	48	NA	NA
Physical Info				
Dimension (WHD)	415mm×44mm×325mm	415mm×44mm×325mm	415mm×44mm×325mm	415mm×44mm×325mm
Relative Humidity	5% ~ 90%, non-condensing	5% ~ 90%, non-condensing	5% ~ 90%, non-condensing	5% ~ 90%, non-condensing
Operating Temperature	0℃ ~ 50℃	0℃ ~ 50℃	0℃ ~ 50℃	0℃ ~ 50℃
Storage Temperature	-40℃ ~ 70℃	-40℃ ~ 70℃	-40℃ ~ 70℃	-40℃ ~ 70℃
Power	AC: 100- 240V, 50-60Hz DC: RPS	AC: 100- 240V, 50-60Hz DC: RPS	AC: 100- 240V, 50-60Hz DC: RPS	AC: 100- 240V, 50-60Hz DC: RPS
Power Consumption	130W only for device 15.4W per port	180W only for device 15.4W per port	130W	180W
EMC safety	FCC, CE, RoHS	FCC, CE, RoHS	FCC, CE, RoHS	FCC, CE, RoHS



# DCRS-5950

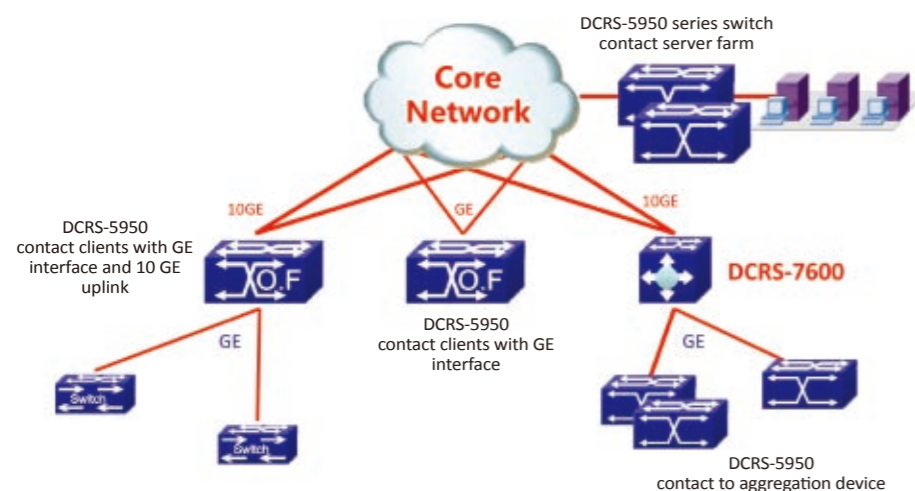
The DCRS-5950-28T/52T series design for the carrier and enterprise service aggregation and campus core network. The switch provides max 2 10GE ports to construct more scalable network.

The DCRS-5950-24/26 easy deployed as aggregation device at FTTX network.

With the rich features and high performance and flexible ports, the products can be deployed to the following networks:



DCRS-5950-28T  
DCRS-5950-52T  
DCRS-5950-24  
DCRS-5950-26



## Key Features and Benefits

- DCRS-5950-28T/52T series supports up to 2 \*10G ports and 24/48 Gigabit ports.
- DCRS-5950-24/26 series supports max 8 GE combo ports and 16 GE SFP ports.
- Flexible speed fan and power management save the energy source.
- High performance and high port density protect customer investment.
- Abundant features for carrier, enterprise and campus network.
- IPv4 and IPv6 dual stack certification Phase II.
- Dynamic routing protocol support such as RIP, OSPF, BGP, PBR etc.
- Support high availability features protect network and device safety.
- Multiservice features for different customers include VLAN, QOS etc.
- More security ability help customer construct more security network like MAC and 802.1X based AAA, radius and Tacacs+ support.
- Easy management network and device to support SNMP, TELNET, CLI, HTTPS etc.

## Specification

Attributes	DCRS-5950-24	DCRS-5950-26	DCRS-5950-28T	DCRS-5950-52T
Ports	16 Gigabit SFP, 8 COMBO (SFP/GT)	16 Gigabit SFP, 8 COMBO (SFP/GT), 2 fixed 10GE ports	20*10/100 /1000 Ethernet Ports , 4xCOMBO (SFP/GT) 2 slots and max 2 10GE,	44*10/100/1000 Ethernet Ports 4xCOMBO (SFP/GT) 2 slots and max 2 10GE,
Performance				
Switching Capability	48Gbps	88Gbps	128Gbps	176Gbps
Throughput	36Mbps	66Mbps	96Mbps	131Mbps
MAC Address	16K	16K	8K	8K
VLAN Table	max 4K	max 4K	max 4K	max 4K
ACL TABLE	2k	2k	1k	1k
Routing Table	12k	12k	512	512
L3 Interface	max 511	max 511	max 511	max 511
Port Queues	8	8	8	8
Physical Info				
Dimension (WHD)	440mm×44mm ×420mm	440mm×44mm ×420mm	415mm×44mm ×325mm	415mm×44mm ×325mm
Relative Humidity	5% ~ 90%, non-condensing	5% ~ 90%, non-condensing	5% ~ 90%, non-condensing	5% ~ 90%, non-condensing
Operating Temperature	0℃ ~ 50℃	0℃ ~ 50℃	0℃ ~ 50℃	0℃ ~ 50℃
Storage Temperature	-40℃ ~ 70℃	-40℃ ~ 70℃	-40℃ ~ 70℃	-40℃ ~ 70℃
Power	AC: 90- 264V, 47-63Hz DC: -40--60V	AC: 90- 264V, 47-63Hz DC: -40--60V	AC: 100- 240V, 50-60Hz	AC: 100- 240V, 50-60Hz
Power Consumption	80W	80W	130W	180W
EMC safety	FCC, CE, RoHS	FCC, CE, RoHS	FCC, CE, RoHS	FCC, CE, RoHS

# DCRS-5750

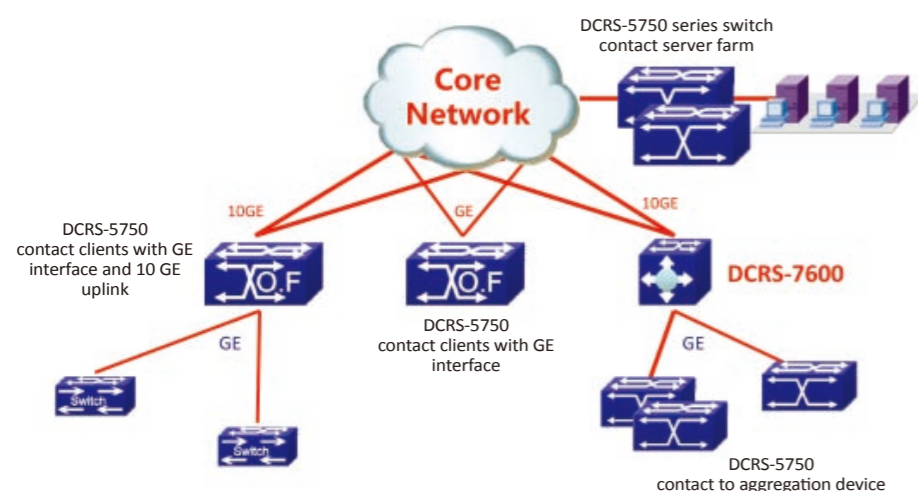
The DCRS-5750 series design for the carrier and enterprise service aggregation and campus core network. The switch provides max 4 10GE ports to construct more scalable network.

The DCRS-5750-POE series switch can support POE and work with WIFI AC, IP phone, IP camera and other POE PD device.

With the rich features and high performance and flexible ports, the products can be deployed to the following networks:



DCRS-5750-28T-POE DCRS-5750-52T-POE  
DCRS-5750-28T DCRS-5750-52T



## Key Features and Benefits

- DCRS-5750 series supports up to 4 \*10G ports and 24/48 Gigabit ports.
- DCRS-5750-POE series supports max 24 or 48 POE port and max power is 15.4W.
- Carrier class redundant power supplies provide high availability.
- Flexible speed fan and power management save the energy source.
- Layer 3 lite function.
- Abundant features for carrier, enterprise and campus network.
- IPv4 and IPv6 dual stack certification Phase II.
- Dynamic routing protocol support such as RIP, OSPF, BGP, PBR etc.
- Support high availability features protect network and device safety.
- Multiservice features for different customers include VLAN, QOS etc.
- More security ability help customer construct more security network like MAC and 802.1X based AAA, radius and Tacacs+ support.
- Easy management network and device to support SNMP, TELNET, CLI, HTTPS etc.

# Specification

Attributes	DCRS-5750-28T-POE	DCRS-5750-52T-POE	DCRS-5750-28T	DCRS-5750-52T
Ports	20*10/100 /1000 Ethernet Ports with 4xCOMBO (SFP/GT) 2 slots and max 4 10GE,	44*10/100/1000 Ethernet Ports 4xCOMBO (SFP/GT) 2 slots and max 4 10GE,	20*10/100 /1000 Ethernet Ports , 4xCOMBO (SFP/GT) 2 slots and max 4 10GE,	44*10/100/1000 Ethernet Ports 4xCOMBO (SFP/GT) 2 slots and max 4 10GE,
Performance				
Switching Capability	128Gbps	176Gbps	128Gbps	176Gbps
Throughput	96Mbps	131Mbps	96Mbps	131Mbps
MAC Address	Max 8K	Max 8K	Max 8K	Max 8K
VLAN Table	max 4K	max 4K	max 4K	max 4K
ACL TABLE	Max 1k	Max 1k	Max 1k	Max 1k
Routing Table	Max 256	Max 256	Max 256	Max 256
L3 Interface	max 511	max 511	max 511	max 511
Port Queues	8	8	8	8
POE ports	24	48	NA	NA
Physical Info				
Dimension (WHD)	415mm×44mm ×325mm	415mm×44mm ×325mm	415mm×44mm ×325mm	415mm×44mm ×325mm
Relative Humidity	5% ~ 90%, non-condensing	5% ~ 90%, non-condensing	5% ~ 90%, non-condensing	5% ~ 90%, non-condensing
Operating Temperature	0℃ ~50℃	0℃ ~50℃	0℃ ~50℃	0℃ ~50℃
Storage Temperature	-40℃ ~70℃	-40℃ ~70℃	-40℃ ~70℃	-40℃ ~70℃
Power	AC: 100-240V, 50-60Hz DC: RPS	AC: 100-240V, 50-60Hz DC: RPS	AC: 100-240V, 50-60Hz DC: RPS	AC: 100-240V, 50-60Hz DC: RPS
Power Consumption	130W only for device 15.4W per port	180W only for device 15.4W per port	130W	180W
EMC safety	FCC, CE, RoHS	FCC, CE, RoHS	FCC, CE, RoHS	FCC, CE, RoHS



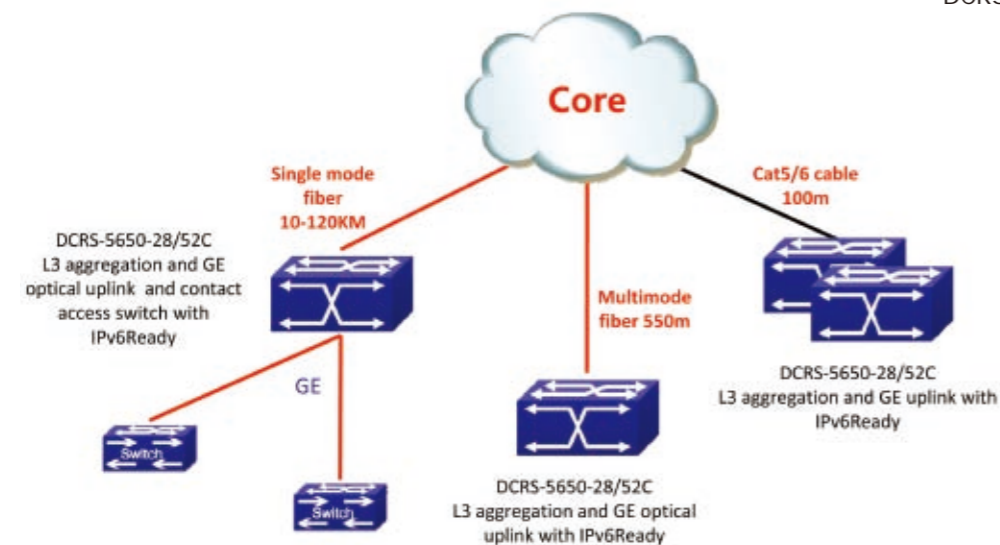
# DCRS-5650

The DCRS-5650 series design for enterprise service aggregation and campus aggregation network. The switch provides max 4 GE combo ports to construct more scalable network.

With the rich features and high performance and flexible ports, the products can be deployed to the following networks:



DCRS-5650-28C  
DCRS-5650-52C



## Key Features and Benefits

DCRS-5650 series supports up to 4 \*GE Combo ports and 24/48 10/100Base-T ports.

Easy deployed at aggregation layer.

Rich Layer 3 functions.

Abundant features for carrier, enterprise and campus network.

IPv4 and IPv6 dual stack certification Phase II.

Dynamic routing protocol support such as RIP, OSPF, BGP, PBR etc.

Support high availability features protect network and device safety.

Multiservice features for different customers include VLAN, QOS etc.

More security ability help customer construct more security network like 802.1X based AAA, radius and Tacacs+ support.

Easy management network and device to support SNMP, TELNET, CLI, HTTPS etc.

## Specification

Attributes	DCRS-5650-28C	DCRS-5650-52C
Ports	24*10/100Base-TX+4*Gigabits Combo(SFP/GT)	48*10/100Base-TX+4*Gigabits Combo(SFP/GT)
Performance		
Switching Capacity	12.8Gbps	17.6Gbps
Forwarding Rate	9.6Mpps	13.2Mpps
MAC ADDRESS	Max 8k	Max 8k
ACL TABLE	Max 1k	Max 1k
Routing Table	Max 256	Max 256
Vlan Table	4K	4K
Queues per port	Max 8	Max 8
L3 Interface	Max 256	Max 256
Physical		
Dimension (WHD)	440mm×44mm×230mm	440mm×44mm×230mm
Relative Humidity	5% ~ 90%, non-condensing	5% ~ 90%, non-condensing
Operating Temperature	0℃ ~ 50℃	0℃ ~ 50℃
Storage Temperature	-40℃ ~ 70℃	-40℃ ~ 70℃
Power	AC: 100- 240V DC: -48V	AC: 100- 240V DC: -48V
Power Consumption	MAX 30W	MAX 30W
EMC safety	FCC, CE, RoHS	FCC, CE, RoHS

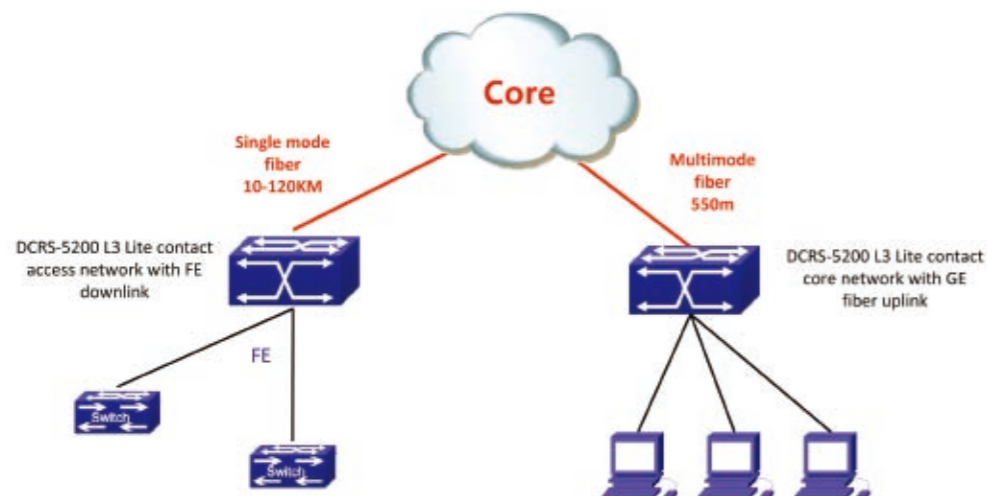
# DCRS-5200

The DCRS-5200 series design for enterprise service aggregation and campus aggregation network. The switch provides max 4 GE combo ports to construct more scalable network.

With the rich features and high performance and flexible ports, the products can be deployed to the following networks:



DCRS-5200-52  
DCRS-5200-28



## Key Features and Benefits

- DCRS-5200 series supports up to 4 \*GE Combo ports and 24/48 10/100Base-T ports.
- Easy deployed at aggregation layer.
- Rich Layer 3 functions.
- Abundant features for carrier, enterprise and campus network.
- IPv4 and IPv6 dual stack certification Phase II.
- Dynamic routing protocol support such as RIP, PBR etc.
- Support high availability features protect network and device safety.
- Multiservice features for different customers include VLAN, QOS etc.
- More security ability help customer construct more security network like 802.1X based AAA, radius and Tacacs+ support.
- Easy management network and device to support SNMP, TELNET, CLI, etc.

## Specification

Attributes	DCRS-5200-28	DCRS-5200-52
Ports	24*10/100Base-TX+4*Gigabits Combo(SFP/GT)	48*10/100Base-TX+4*Gigabits Combo(SFP/GT)
<b>Performance</b>		
Switching Capacity	12.8Gbps	17.6Gbps
Forwarding Rate	9.6Mpps	13.2Mpps
MAC ADDRESS	Max 8k	Max 8k
ACL TABLE	Max 1k	Max 1k
Routing Table	Max 64	Max 64
Vlan Table	Max 4K	Max 4K
Queues per port	Max 8	Max 8
L3 Interface	Max 256	Max 256
<b>Physical</b>		
Dimension(WHD)	440mm×44mm×230mm	440mm×44mm×230mm
Relative Humidity	5%~90%, non-condensing	5%~90%, non-condensing
Operating Temperature	0℃~50℃	0℃~50℃
Storage Temperature	-40℃~70℃	-40℃~70℃
Power	AC: 100- 240V	AC: 100- 240V
Power Consumption	MAX 30W	MAX 30W
EMC safety	FCC, CE, RoHS	FCC, CE, RoHS



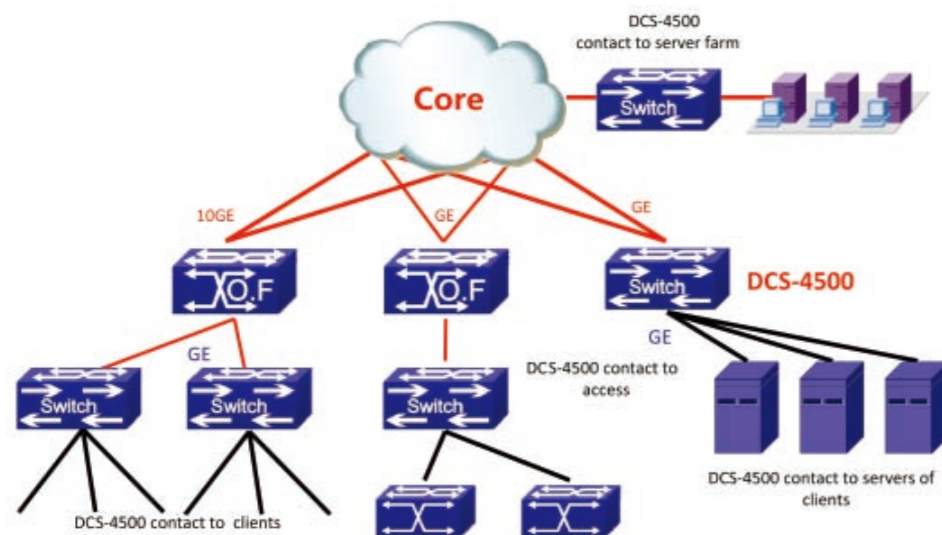
# DCS-4500

The DCS-4500 series design for enterprise service aggregation or access layer and campus aggregation or access network.

With the rich features, high performance and flexible ports, the products can be deployed to the following networks:



DCS-4500-26T  
DCS-4500-50T



## Key Features and Benefits

- DCS-4500 series supports up to 4 \*GE Combo ports and 26/50 10/100/1000Base-T ports.
- DCS-4500-26T-POE support contact WIFI, IP phone and IP surveillance etc.
- Easy deployed at aggregation and access layer.
- Abundant features for carrier, enterprise and campus network.
- IPv4 and IPv6 dual stack certification Phase II.
- Rich multicast features to support Triple Play deployed.
- Multiservice features for different customers include VLAN, QinQ, QOS etc.
- More security ability help customer construct more security network like 802.1X based AAA, radius and Tacacs+ support.
- Easy management network and device to support SNMP, TELNET, CLI, etc.

## Specification

Item	DCS-4500-26T	DCS-4500-26T-POE	DCS-4500-50T
Ports	22x10/100/1000 Base-T 4*Gigabits Combo (SFP/GT)	22x10/100/1000 Base-T 4*Gigabits Combo (SFP/GT)	46x10/100/1000 Base-T 4*Gigabits Combo (SFP/GT)
<b>Performance</b>			
Switching Capacity	52Gbps	52Gbps	100Gbps
Forwarding Rate	39Mpps	39Mpps	75Mpps
MAC ADDRESS	Max 8k	Max 8k	Max 8k
ACL TABLE	Max 512	Max 512	Max 512
Queues per port	Max 8	Max 8	Max 8
VLAN TABLE	Max 4k	Max 4k	Max 4k
POE Ports	NA	24	NA
<b>Physical</b>			
Dimension(W×H×D)	440 x 415 x 44 mm	440 x 415 x 44 mm	440 x 415 x 44 mm
Power Supply	AC: 100 V~240 V	Input AC: 100 V~240 V ; PoE output: 43~59V	AC: 100 V~240V
Power Consumption	≤60W	≤500W	≤90W
Temperature	Working 0°C~50°C, storage -40°C~70°C		
Relative Humidity	5%~95%~non-condensing		
EMC safety	FCC, CE, RoHS	FCC, CE, RoHS	FCC, CE, RoHS

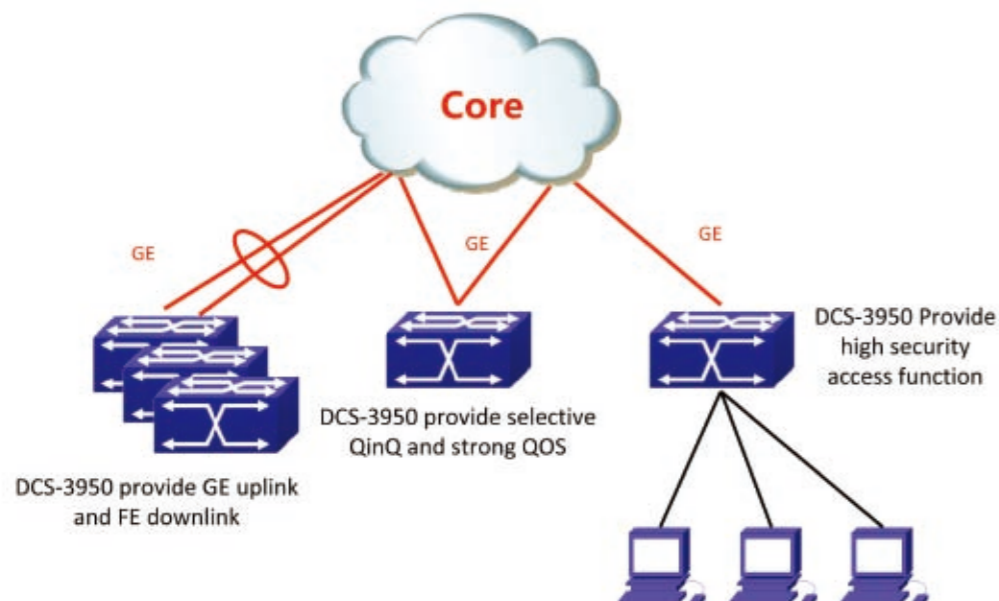
# DCS-3950

The DCS-3950 series design for carrier access, enterprise access layer and campus access network.

With the rich features, high performance and flexible ports, the products can be deployed to the following networks



DCS-3950-28CT-POE    DCS-3950-26C  
DCS-3950-28C        DCS-3950-52C



## Key Features and Benefits

- DCS-3950 series supports up to 4 \*GE Combo ports and 24/48 10/100Base-T ports.
- DCS-3950-28T-POE support contact WIFI, IP phone and IP surveillance etc.
- Easy deployed at access layer network.
- Abundant features for carrier, enterprise and campus network.
- IPv4 and IPv6 dual stack certification.
- Rich multicast features to support Triple Play deployed.
- Multiservice features for different customers include VLAN, selective QinQ, QOS etc.
- More security ability help customer construct more security network like 802.1X , PPPOE+ and MAC based AAA, radius and Tacacs+ support.
- Easy management network and device to support SNMP, TELNET, CLI, etc.

## Specification

Item	DCS-3950-26C	DCS-3950-28CT-POE	DCS-3950-28C	DCS-3950-52C
Fixed Port	24*10/100Base-TX+2*Gigabits Combo(SFP/GT)	24*10/100Base-TX POEports+2* Gigabits Combo(SFP/GT) + 2*10/100/1000Base-T	24*10/100Base-TX+4*Gigabits Combo(SFP/GT)	48*10/100Base-TX+4*Gigabits Combo(SFP/GT)
<b>Performance</b>				
Switching Fabric	8.8Gbps	12.8Gbps	12.8Gbps	17.6Gbps
Forwarding Rate	6.6Mpps	9.6Mpps	9.6Mpps	13.2Mpps
MAC Address Table	Max 8K	Max 8K	Max 8K	Max 8K
Queues per port	8 for Gigabits ports, 4 for 10/100M ports	8 for Gigabits ports, 4 for 10/100M ports	8 for Gigabits ports, 4 for 10/100M ports	8 for Gigabits ports, 4 for 10/100M ports
ACL	Max 1K	Max 1K	Max 1K	Max 1K
Jumbo	Y	Y	Y	Y
VLAN Table	4K	4K	4K	4K
<b>Hardware Configuration</b>				
Outline Dimension	440mm * 171.2mm * 43mm	440mm * 171.2mm * 43 mm	440mm * 171.2mm * 43mm	440mm * 229mm * 44mm
Power Supply	AC: 100~240 V AC, 50/60 Hz	Input: 100~240 V AC PoE output: 43~59V	AC: 100~240 V AC, 50/60 Hz	AC: 100~240 V AC, 50/60 Hz
Power Consumption	≤30W	≤400W	≤30W	≤30W
Relative Humidity	5%~95%, non-condensing	5%~95%, non-condensing	5%~95%, non-condensing	5%~95%, non-condensing
Operating Temperature	0℃~50℃	0℃~50℃	0℃~50℃	0℃~50℃
EMC safety	FCC, CE, RoHS	FCC, CE, RoHS	FCC, CE, RoHS	FCC, CE, RoHS



# Specification

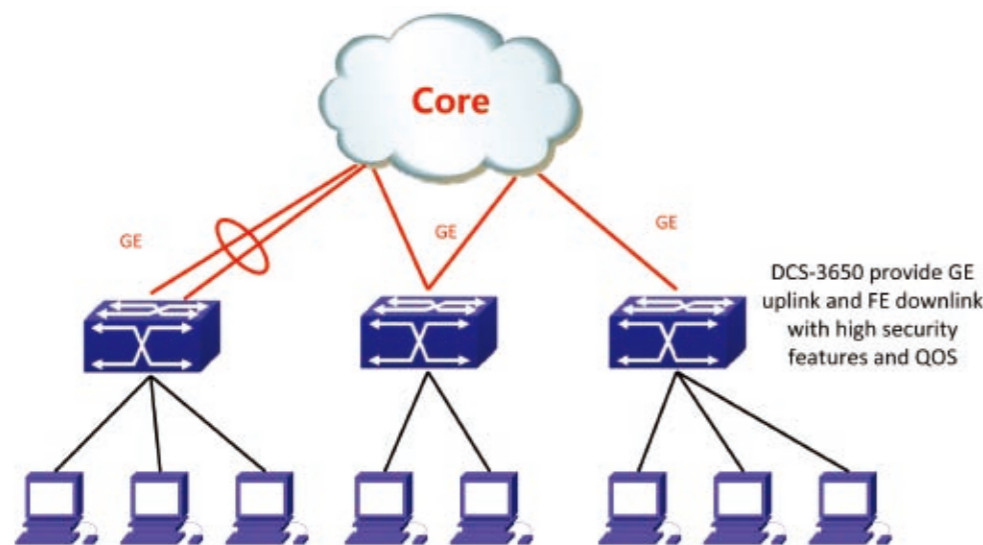
## DCS-3650

The DCS-3650 series design for carrier access, enterprise access layer and campus access network.

With the rich features, high performance and flexible ports, the products can be deployed to the following networks



DCS-3650-8C-PoE      DCS-3650-16C  
DCS-3650-24      DCS-3650-26C



### Key Features and Benefits

DCS-3650 series include much more types which include 8 ports, 16 ports, 24 ports 10/100Base-T Ethernet switch.

The DCS-3650 series support 8 ports and 24 ports 10/100Base-T POE ports to contact WIFI, IP phone and IP surveillance etc.

Easy deployed at access layer network.

Abundant features for carrier, enterprise and campus network.

IPv4 and IPv6 dual stack.

Rich multicast features to support Triple Play deployed.

Multiservice features for different customers include VLAN, QOS and ACL etc.

More security ability help customer construct more security network like 802.1X and MAC based AAA, radius and Tacacs+ support.

Easy management network and device to support SNMP, TELNET, CLI, etc.

Item	DCS-3650-24	DCS-3650-16	DCS-3650-8	DCS-3650-26C	DCS-3650-8C	DCS-3650-16C
Ports	24*10/100 Base-TX ports	16*10/100 Base-TX ports	8*10/100 Base-TX ports	24*10/100 Base-TX + 2* Gigabits Combo (SFP/GT)	8*10/100 Base-TX + 1* Gigabits Combo (SFP/GT)	16*10/100 Base-TX + 2* Gigabits Combo (SFP/GT)
<b>Performance</b>						
Switching Fabric	4.8Gbps	3.2Gbps	1.6Gbps	8.8Gbps	3.6Gbps	7.2Gbps
Forwarding Rate	3.2Mpps	2.1Mpps	1.1Mpps	6.6Mpps	2.4Mpps	4.8Mpps
MAC ADDRESS	Max 8k	Max 8k	Max 8k	Max 8k	Max 8k	Max 8k
ACL TABLE	Max 512	Max 512	Max 512	Max 512	Max 512	Max 512
Queues per port	4	4	4	4	4	4
VLAN TABLE	4k	4k	4k	4k	4k	4k
Jumbo	Y	Y	Y	Y	Y	Y
<b>Hardware Configuration</b>						
Outline Dimension	19 inch	19 inch	11 inch	19 inch	11 inch	19 inch
Relative Humidity	5%~90%, non-condensing	5%~90%, non-condensing	5%~90%, non-condensing	5%~90%, non-condensing	5%~90%, non-condensing	5%~90%, non-condensing
Operating Temperature	0℃ ~ 50℃	0℃ ~ 50℃	0℃ ~ 50℃	0℃ ~ 50℃	0℃ ~ 50℃	0℃ ~ 50℃
Power Supply	AC: 100~240 V AC: 50/60 Hz (internal AC power supply)	AC: 100~240 V AC: 50/60 Hz (internal AC power supply)	AC: 100~240 V AC: 50/60 Hz (internal AC power supply)	AC: 100~240 V AC: 50/60 Hz (internal AC power supply)	AC: 100~240 V AC: 50/60 Hz (internal AC power supply)	AC: 100~240 V AC: 50/60 Hz (internal AC power supply)
Power Consumption	20W	20W	20W	20W	20W	20W
ECM safety	FCC, CE, ROHS	FCC, CE, ROHS	FCC, CE, ROHS	FCC, CE, ROHS	FCC, CE, ROHS	FCC, CE, ROHS
Item	DCS-3650-26C-DC	DCS-3650-26C-POE	DCS-3650-26C-POE-DC	DCS-3650-8C-DC	DCS-3650-8C-POE	DCS-3650-8C-POE-DC
Ports	24*10/100 Base-TX + 2 GE combo ports	24*10/100 Base-TX + 2 GE combo ports	24*10/100 Base-TX + 2 GE combo ports	8*10/100 Base-TX + 1 GE combo port	8*10/100 Base-TX + 1 GE combo port	8*10/100 Base-TX + 1 GE combo port
<b>Performance</b>						
Switching Fabric	4.8Gbps	3.2Gbps	1.6Gbps	8.8Gbps	3.6Gbps	7.2Gbps
Forwarding Rate	3.2Mpps	2.1Mpps	1.1Mpps	6.6Mpps	2.4Mpps	4.8Mpps
MAC ADDRESS	Max 8k	Max 8k	Max 8k	Max 8k	Max 8k	Max 8k
ACL TABLE	Max 512	Max 512	Max 512	Max 512	Max 512	Max 512
Queues per port	4	4	4	4	4	4
VLAN TABLE	4k	4k	4k	4k	4k	4k
POE ports		24 ports and max 15.4W for one port	24 ports and max 15.4W for one port		24 ports and max 15.4W for one port	24 ports and max 15.4W for one port
Jumbo	Y	Y	Y	Y	Y	Y
<b>Hardware Configuration</b>						
Outline Dimension	19 inch	19 inch	19 inch	11 inch	19 inch	19 inch
Relative Humidity	5%~90%, non-condensing	5%~90%, non-condensing	5%~90%, non-condensing	5%~90%, non-condensing	5%~90%, non-condensing	5%~90%, non-condensing
Operating Temperature	0℃ ~ 50℃	0℃ ~ 50℃	0℃ ~ 50℃	0℃ ~ 50℃	0℃ ~ 50℃	0℃ ~ 50℃
Power Supply	DC: -48V (internal DC power supply)	AC: 100~240 V AC, 50/60 Hz (internal AC power supply)	DC: -48V (internal DC power supply)	DC: -48V (internal DC power supply)	AC: 100~240 V AC, 50/60 Hz (internal AC power supply)	DC: -48V (internal DC power supply)
Power Consumption	20W	180W	180W	20W	130W	130W
ECM safety	FCC, CE, ROHS	FCC, CE, ROHS	FCC, CE, ROHS	FCC, CE, ROHS	FCC, CE, ROHS	FCC, CE, ROHS



Abundant Products  
Advanced Technology

Security Products

2





# DCFW-1800E-10G

DCFW-1800E-10G multi-function security gateway is mainly used in medium and large enterprise, education institutions, government and other networks environment, with leading 64-bit multi-core MIPS architecture and high-speed switching bus technology DCFW-1800E-8G not only achieves a comprehensive firewall performance, but also behaving excellently in anti-virus, IPS, VPN, traffic shaping and application layer behavior management. DCFW-1800E-10G also supports anti-ARP cheating, Internet behavior management, bandwidth management, multi-PPPOE link bundling and user certification etc. DCFW-1800E-10G provides 1 GE, 12 SFP and 2XFP ports, which fully meets user needs.



## Key Features

- Support multi-interface link load balance and server load balance. Support ports redundancy, provide link preferentially selection
- Has high speed processing resolution
- Has 64 bits high security OS with private intellectual property rights
- Strong anti-DoS (deny of service) ability
- Powerful real-time anti-Virus ability(Traffic scanning receiving synchronously)
- Powerful intrusion prevention support(IPS)
- Contains the IPSEC VPN, SSL VPN module inside, High performance VPN throughput.
- Unique anti-ARP attack solution.
- Support P2P (BT, Kazaa, Vagga, eMule) application control, support 1kbps Qos
- Support IM (MSN, Google talk, Yahoo messenger) application control,
- Support network games optimizing
- Support dynamic route protocol(RIPv1&v2, OSPF, BGP)
- Support JavaApplet, Active-X, URL filter(Category based), content filter(WEB page) function
- Easy to setup, manage, install
- CE, RoHS, EAL3 certificated

# DCFW-1800E-8G

DCFW-1800E-8G multi-function security gateway is mainly used in medium and large enterprise, education institutions, government and other networks environment, with leading 64-bit multi-core MIPS architecture and high-speed switching bus technology DCFW-1800E-8G not only achieves a comprehensive firewall performance, but also behaving excellently in anti-virus, IPS, VPN, traffic shaping and application layer behavior management. DCFW-1800E-8G also supports anti-ARP cheating, Internet behavior management, bandwidth management, multi-PPPOE link bundling and user certification etc. DCFW-1800E-8G provides 6 GE and 6GE/SPF (Combo) ports, which fully meets user needs.



## Key Features

- Support multi-interface link load balance and server load balance. Support ports redundancy, provide link preferentially selection
- Has high speed processing resolution
- Has 64 bits high security OS with private intellectual property rights
- Strong anti-DoS (deny of service) ability
- Powerful real-time anti-Virus ability(Traffic scanning receiving synchronously)
- Powerful intrusion prevention support(IPS)
- Contains the IPSEC VPN, SSL VPN module inside, High performance VPN throughput.
- Unique anti-ARP attack solution.
- Support P2P (BT, Kazaa, Vagga, eMule) application control, support 1kbps Qos
- Support IM (MSN, Google talk, Yahoo messenger) application control,
- Support network games optimizing
- Support dynamic route protocol(RIPv1&v2, OSPF, BGP)
- Support JavaApplet, Active-X, URL filter(Category based), content filter(WEB page) function
- Easy to setup, manage, install
- CE, RoHS, EAL3 certificated

# DCFW-1800E-4G

DCFW-1800E-4G multi-function security gateway is mainly used in medium and large enterprise, education institutions, government and other networks environment, with leading 64-bit multi-core MIPS architecture and high-speed switching bus technology DCFW-1800E-4G not only achieves a comprehensive firewall performance, but also behaving excellently in anti-virus, IPS, VPN, traffic shaping and application layer behavior management. DCFW-1800E-4G also supports anti-ARP cheating, Internet behavior management, bandwidth management, multi-PPPOE link bundling and user certification etc. DCFW-1800E-4G provides 6 GE and 6GE/SPF (Combo) ports, which fully meets user needs.



## Key Features

- Support multi-interface link load balance and server load balance. Support ports redundancy, provide link preferentially selection
- Has high speed processing resolution
- Has 64 bits high security OS with private intellectual property rights
- Strong anti-DoS (deny of service) ability
- Powerful real-time anti-Virus ability(Traffic scanning receiving synchronously)
- Powerful intrusion prevention support(IPS)
- Contains the IPSEC VPN, SSL VPN module inside, High performance VPN throughput.
- Unique anti-ARP attack solution.
- Support P2P (BT, Kazaa, Vagga, eMule) application control, support 1kbps Qos
- Support IM (MSN, Google talk, Yahoo massager) application control,
- Support network games optimizing
- Support dynamic route protocol(RIPv1&v2, OSPF, BGP)
- Support JavaApplet, Active-X, URL filter(Category based), content filter(WEB page) function
- Easy to setup, manage, install
- CE, RoHS, EAL3 certificated

# DCFW-1800E-2G

DCFW-1800E-2G multi-function security gateway is mainly used in medium and large enterprise, education institutions, government and other networks environment, with leading 64-bit multi-core MIPS architecture and high-speed switching bus technology DCFW-1800E-2G not only achieves a comprehensive firewall performance, but also behaving excellently in anti-virus, IPS, VPN, traffic shaping and application layer behavior management. DCFW-1800E-2G also supports anti-ARP cheating, Internet behavior management, bandwidth management, multi-PPPOE link bundling and user certification etc. DCFW-1800E-2G provides 6 GE and 2GE/SPF (Combo) ports, which fully meets user needs.



## Key Features

- Support multi-interface link load balance and server load balance. Support ports redundancy, provide link preferentially selection
- Has high speed processing resolution
- Has 64 bits high security OS with private intellectual property rights
- Strong anti-DoS (deny of service) ability
- Powerful real-time anti-Virus ability(Traffic scanning receiving synchronously)
- Powerful intrusion prevention support(IPS)
- Contains the IPSEC VPN, SSL VPN module inside, High performance VPN throughput.
- Unique anti-ARP attack solution.
- Support P2P (BT, Kazaa, Vagga, eMule) application control, support 1kbps Qos
- Support IM (MSN, Google talk, Yahoo massager) application control,
- Support network games optimizing
- Support dynamic route protocol(RIPv1&v2, OSPF, BGP)
- Support JavaApplet, Active-X, URL filter(Category based), content filter(WEB page) function
- Easy to setup, manage, install
- CE, RoHS, EAL3 certificated



## DCFW-1800E-V2

DCFW-1800E-V2 multi-function security gateway is mainly used in small and medium enterprise, education institutions, government agencies and other networks environment, with leading 64-bit multi-core MIPS architecture and high-speed switching bus technology DCFW-1800E-V2 not only achieves a comprehensive firewall performance, but also behaving excellently in anti-virus, IPS, VPN, traffic shaping and application layer behavior management. DCFW-1800E-V2 also supports anti-ARP cheating, Internet behavior management, bandwidth management, multi-PPPOE link bundling and user certification etc. DCFW-1800E-V2 provides 8 GE ports, which fully meets user needs.



### Key Features

- Support multi-interface link load balance which is designed for SME (Small & Medium Enterprise)/Support ports redundancy, provide link preferentially selection
- Has high speed processing resolution
- Has 64 bits high security OS with private intellectual property rights
- Strong anti-DoS (deny of service) ability
- Powerful real-time anti-Virus ability(Traffic scanning receiving synchronously)
- Powerful intrusion prevention support(IPS)
- Contains the IPSEC VPN, SSL VPN module inside, High performance VPN throughput.
- Unique anti-ARP attack solution.
- Support P2P (BT, Kazaa, Vagga, eMule) application control, support 1kbps Qos
- Support IM (MSN, Google talk, Yahoo massager) application control,
- Support network games optimizing
- Support dynamic route protocol(RIPv1&v2, OSPF, BGP)
- Support JavaApplet, Active-X, URL filter(Category based), content filter(WEB page) function
- Easy to setup, manage, install
- CE, RoHS, EAL3 certificated

## DCFW-1800S-V2

DCFW-1800S-V2 multi-function security gateway is mainly used in small and medium enterprise, education institutions, government agencies and other networks environment, with leading 64-bit multi-core MIPS architecture and high-speed switching bus technology DCFW-1800S-V2 not only achieves a comprehensive firewall performance, but also behaving excellently in anti-virus, IPS, VPN, traffic shaping and application layer behavior management. DCFW-1800S-V2 also supports anti-ARP cheating, Internet behavior management, bandwidth management, multi-PPPOE link bundling and user certification etc. DCFW-1800S-V2 provides 8 GE ports, which fully meets user needs.



### Key Features

- Support multi-interface link load balance which is designed for SME (Small & Medium Enterprise)/Support ports redundancy, provide link preferentially selection
- Has high speed processing resolution
- Has 64 bits high security OS with private intellectual property rights
- Strong anti-DoS (deny of service) ability
- Powerful real-time anti-Virus ability(Traffic scanning receiving synchronously)
- Powerful intrusion prevention support(IPS)
- Contains the IPSEC VPN, SSL VPN module inside, High performance VPN throughput.
- Unique anti-ARP attack solution.
- Support P2P (BT, Kazaa, Vagga, eMule) application control, support 1kbps Qos
- Support IM (MSN, Google talk, Yahoo massager) application control,
- Support network games optimizing
- Support dynamic route protocol(RIPv1&v2, OSPF, BGP)
- Support JavaApplet, Active-X, URL filter(Category based), content filter(WEB page) function
- Easy to setup, manage, install
- CE, RoHS, EAL3 certificated

## DCFW-1800S-H-V2

DCFW-1800S-H-V2 multi-function security gateway is mainly used in SMB users, Internet cafes, hotels, government agencies and other networks environment, with leading 64-bit multi-core MIPS architecture and high-speed switching bus technology DCFW-1800S-H-V2 not only achieves a comprehensive firewall performance, but also behaving excellently in anti-virus, IPS, VPN, traffic shaping and application layer behavior management. DCFW-1800S-H-V2 also supports anti-ARP cheating, Internet behavior management, bandwidth management, multi-PPPOE link bundling and user certification etc. DCFW-1800S-H-V2 provides 5 GE ports, which fully meets the small and medium needs.



### Key Features

- Support multi-interface link load balance which is designed for SME (Small & Medium Enterprise)/Support ports redundancy, provide link preferentially selection
- Has high speed processing resolution
- Has 64 bits high security OS with private intellectual property rights
- Strong anti-DoS (deny of service) ability
- Powerful real-time anti-Virus ability(Traffic scanning receiving synchronously)
- Powerful intrusion prevention support(IPS)
- Contains the IPSEC VPN, SSL VPN module inside, High performance VPN throughput.
- Unique anti-ARP attack solution.
- Support P2P (BT, Kazaa, Vagga, eMule) application control, support 1kbps Qos
- Support IM (MSN, Google talk, Yahoo massager) application control,
- Support network games optimizing
- Support dynamic route protocol(RIPv1&v2, OSPF, BGP)
- Support JavaApplet, Active-X, URL filter(Category based), content filter(WEB page) function
- Easy to setup, manage, install
- New security products for small branch
- CE, RoHS, EAL3 certificated

## DCFW-1800S-L-V3

DCFW-1800S-L-V3 multi-function security gateway is mainly used in SMB users, Internet cafes, hotels, government agencies and other networks environment, with leading 64-bit multi-core MIPS architecture and high-speed switching bus technology DCFW-1800S-L-V3 not only achieves a comprehensive firewall performance, but also behaving excellently in anti-virus, IPS, VPN, traffic shaping and application layer behavior management. DCFW-1800S-L-V3 also supports anti-ARP cheating, Internet behavior management, bandwidth management, multi-PPPOE link bundling and user certification etc. DCFW-1800S-L-V3 provides 5 GE ports, which fully meets the small and medium needs.



### Key Features

- Support multi-interface link load balance which is designed for SME (Small & Medium Enterprise)/Support ports redundancy, provide link preferentially selection
- Has high speed processing resolution
- Has 64 bits high security OS with private intellectual property rights
- Strong anti-DoS (deny of service) ability
- Powerful real-time anti-Virus ability(Traffic scanning receiving synchronously)
- Powerful intrusion prevention support(IPS)
- Contains the IPSEC VPN, SSL VPN module inside, High performance VPN throughput.
- Unique anti-ARP attack solution.
- Support P2P (BT, Kazaa, Vagga, eMule) application control, support 1kbps Qos
- Support IM (MSN, Google talk, Yahoo massager) application control,
- Support network games optimizing
- Support dynamic route protocol(RIPv1&v2, OSPF, BGP)
- Support JavaApplet, Active-X, URL filter(Category based), content filter(WEB page) function
- Easy to setup, manage, install
- New security products for small branch
- CE, RoHS, EAL3 certificated



Model	DCFW-1800E-10G	DCFW-1800E-8G	DCFW-1800-4G	DCFW-1800-2G	DCFW-1800-E-V2/S-V2	DCFW-1800-S-H-V2	DCFW-1800-S-L-V3
Max coexist connection	5,000,000 /10,000,000	5,000,000	4,000,000	2,000,000	1,000,000	200,000	200,000
Max policy	50,000	50,000	40,000	10,000	4,000	1,000	1,000
SSL User (Default/Max)	128/10,000	128/10,000	64/ 4,000	16/1,000	8/ 500	4/ 128	4/ 128
IPSec tunnel	20,000	20,000	10,000	4,000	2,000	512	512
Size (WxDxH,mm)	440 × 520 × 88	442 × 367 × 76	442 × 367 × 76	442 × 367 × 44	442 × 241 × 44	442 × 241 × 44	300 × 165 × 44
DRAM Memory	8GB	4GB	4GB	2G	1GB	512MB	512MB
Flash	512MB	256MB	256MB	256MB	256MB	256MB	256MB
Console	1	1	1	1	1	1	1
AUX	1	1	1	1	NA	NA	NA
USB 2.0 interface	2	2	2	2	1	1	1
CLR button	1	1	1	1	1	1	1
Weight	11.1kg	6.5kg	6.5kg	5.0kg	2.8kg	2.8kg	1.5kg
Power input	AC 100-240V 50/60Hz	AC 100-240V 50/60Hz	AC 100-240V 50/60Hz	AC 100-240V 50/60Hz	AC 100-240V 50/60Hz	AC 100-240V 50/60Hz	AC 100-240V 50/60Hz
Templture	0 - 40°C	0 - 40°C	0 - 40°C	0 - 40°C	0 - 40°C	0 - 40°C	0 - 40°C
Humidity (No drew)	10-95%	10-95%	10-95%	10-95%	10-95%	10-95%	10-95%
MTBF	150,000 hrs (17.1 year)	120,000 hrs (13.7 year)	120,000 hrs (13.7 year)	120,000 hrs (13.7 year)	85,000 hrs (9.7 year)	85,000 hrs (9.7 year)	85,000 hrs (9.7 year)
Max policies per zone->zone context	5,120	5,120	5,120	1,024	512	256	256
Total Zone	512	512	512	128	128	16	16
Max IP Queue	20,000	20,000	10,000	2,500	1,500	300	300
Max Address Book entries	8,192	8,192	8,192	4,096	4,096	512	512
Max Members per Addr Group	256	256	128	32	32	32	32
White List	2,048	2,048	1,024	512	512	512	512
Black List	2,048	2,048	1,024	512	512	512	512

Model	DCFW-1800E-10G	DCFW-1800E-8G	DCFW-1800-4G	DCFW-1800-2G	DCFW-1800-E-V2/S-V2	DCFW-1800-S-H-V2	DCFW-1800-S-L-V3
Keyword	1,024	1,024	512	128	128	128	128
IPSec VPN sessions	20,000	20,000	10,000	3,000	2,000	500	500
Local User Database size	5,000	5,000	5,000	2,000	2,000	256	256
Max tunnel interfaces	512	512	512	128	128	8	8
L2TP tunnels	20,000	20,000	20,000	4,000	4,000	256	256
VLANs per device	4,062	4,062	4,062	4,062	224	224	224
NAT/PAT Service							
NAT rules per device	4,096	4,096	4,096	1,024	1,024	128	128
Max # DHCP Clients on any int	4,096	4,096	4,096	4,096	4,096	4,096	4,096
Max routes (all dynamic routing)	20,000	20,000	10,000	2,000	2,000	512	512
Forwarding Table size per device	20,000	20,000	10,000	2,500	2,500	256	256
Max policy-based routing context entries	255	255	255	255	255	255	255
Max VR	500	200	200	8	8	2	2