

Fiber Optical Splitter

Performance Specifications

•**1×N** PLC Splitter (Measured at room temperature and **excludes** connector loss)

Type		1×2	1×4	1×8	1×16	1×32	1×64
Fiber Type		9/125 um SMF-28e or customer appoint					
Operating Wavelength(nm)		1260~1650					
Insertion Loss(dB)	Typical	3.6	6.8	10.0	13.0	16.0	19.5
	(P/S)Max	3.8/4.0	7.1/7.3	10.2/10.5	13.5/13.7	16.5/16.8	20.5/21.0
Loss Uniformity(dB)	Max	0.6	0.6	0.8	1.2	1.5	2.5
Polarisation Dependent Loss(dB)	Max	0.15	0.15	0.25	0.3	0.3	0.3
Directivity(dB)	Min	55					
Return Loss(dB)	Min	UPC:50 APC:60					
Operating Temperature(°C)		-40~85					
Storage Temperature(°C)		-40~85					

•**2×N** PLC Splitter (Measured at room temperature and **excludes** connector loss)

Type		2×2	2×4	2×8	2×16	2×32	2×64
Fiber Type		9/125 um SMF-28e or customer appoint					
Operating Wavelength(nm)		1260~1650					
Insertion Loss(dB)	Typical	4.0	7.0	10.5	13.5	16.5	20.5
	(P/S)Max	4.1/4.3	7.4/7.6	10.8/11.0	14.3/14.5	17.3/17.5	20.7/21.5
Loss Uniformity(dB)	Max	0.8	0.8	1.5	2.0	2.5	2.5
Polarisation Dependent Loss(dB)	Max	0.2	0.2	0.3	0.4	0.4	0.4
Directivity(dB)	Min	55					
Return Loss(dB)	Min	UPC:50 APC:60					
Operating Temperature(°C)		-40~85					
Storage Temperature(°C)		-40~85					

•**1×N** PLC Splitter (Measured at room temperature and **includes** connector loss)

Type		1×2	1×4	1×8	1×16	1×32	1×64
Fiber Type		9/125 um SMF-28e or customer appoint					
Operating Wavelength (nm)		1260~1650					
Insertion Loss (dB)	Typical	3.9	7.1	10.3	13.3	16.3	19.8
	(P/S)Max	4.1/4.3	7.4/7.6	10.5/10.8	13.8/14.0	16.8/17.0	20.8/21.3
Loss Uniformity (dB)	Max	0.6	0.6	0.8	1.2	1.5	2.5
Polarisation Dependent Loss (dB)	Max	0.15	0.15	0.25	0.3	0.3	0.3
Directivity (dB)	Min	55					
Return Loss (dB)	Min	UPC:50 APC:6-					
Operating Temperature (°C)		-40~85					
Storage Temperature (°C)		-40~85					

•**2×N** PLC Splitter (Measured at room temperature and **includes** connector loss)

Type		2×2	2×4	2×8	2×16	2×32	2×64
Fiber Type		9/125 um SMF-28e or customer appoint					
Operating Wavelength(nm)		1260~1650					
Insertion Loss(dB)	Typical	4.3	7.3	10.8	13.8	16.8	20.8
	(P/S)Max	4.4/4.6	7.7/7.9	11.1/11.3	14.6/14.8	17.6/17.8	21.0/21.8
Loss Uniformity(dB)	Max	0.8	0.8	1.5	2.0	2.5	2.5
Polarisation Dependent Loss(dB)	Max	0.2	0.2	0.3	0.4	0.4	0.4
Directivity(dB)	Min	55					
Return Loss(dB)	Min	UPC:50 APC:60					
Operating Temperature(°C)		-40~85					
Storage Temperature(°C)		-40~85					

Compliance

- Telcordia GR - 1209 - CORE
- Telcordia GR - 1221 - CORE

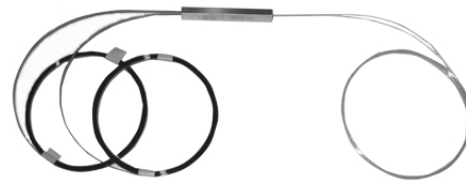
Key Features

- Low Insertion loss and Low PDL
- Uniform power splitting
- High reliability
- Excellent environmental stability
- Compact size and various package

Applications

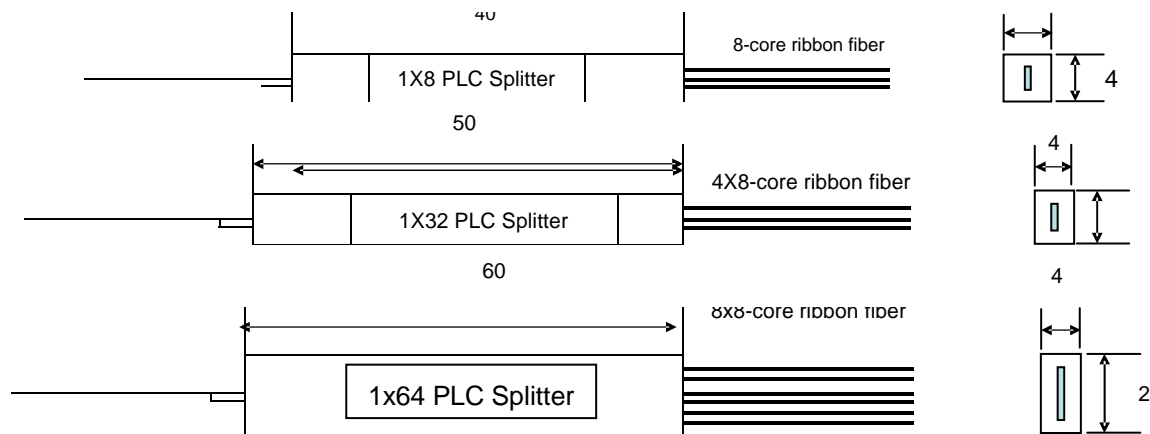
- FTTx Systems
- Digital, hybrid and AM-Video systems LAN, WAN and Metro Networks
- CATV systems
- Other applications in fiber optic systems

PLC Splitter Bare Device



Package Dimensions

Port	1x2	2x2	1x4	2x4	1x8	2x8	1x16	2x16	1x32	2x32	1x64	2x64
WxHxL (mm)	4x4 x40	4x4 x50	4x4 x40	4x4 x50	4x4 x40 4x4.5 x45	4x4 x50	4x7x50	4x7x60	4x7x50	4x7x60	4x12x60	



Ordering Information

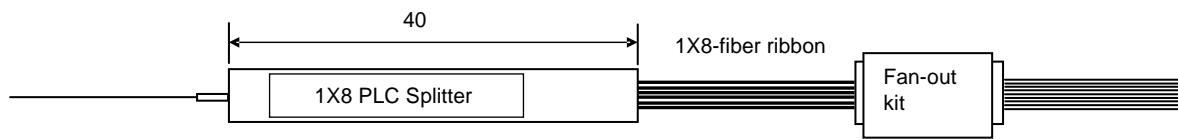
PD	-XXX	-XX	-XX	-XX	-XX
	Port number	Input fiber type	Input fiber length	Output fiber type	Output fiber length
P=PLC Splitter D=Device	102=1x2 202=2x2 ... 264=2x64	00=250um bare fiber 01=900um loose tube 02=900um tight tube	10=1.0m 12=1.2m 15=1.5m ...	00=250um bare fiber 01=250um ribbon fiber	10=1.0m 12=1.2m 15=1.5m ...

PLC Splitter Bare Device with Fan-out kit



Package Dimensions

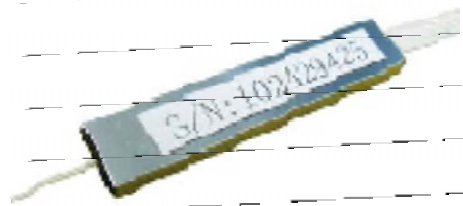
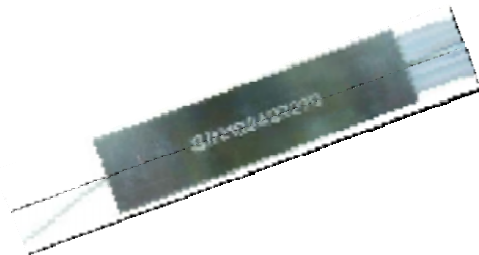
Port	1x2	2x2	1x4	2x4	1x8	2x8	1x16	2x16	1x32	2x32	1x64	2x64
WxHxL (mm)	4x4x40	4x4x50	4x4x40	4x4x50	4x4x40 4x4.5x45	4x4x50	4x7x50	4x7x60	4x7x50	4x7x60	4x12x60	



Ordering Information

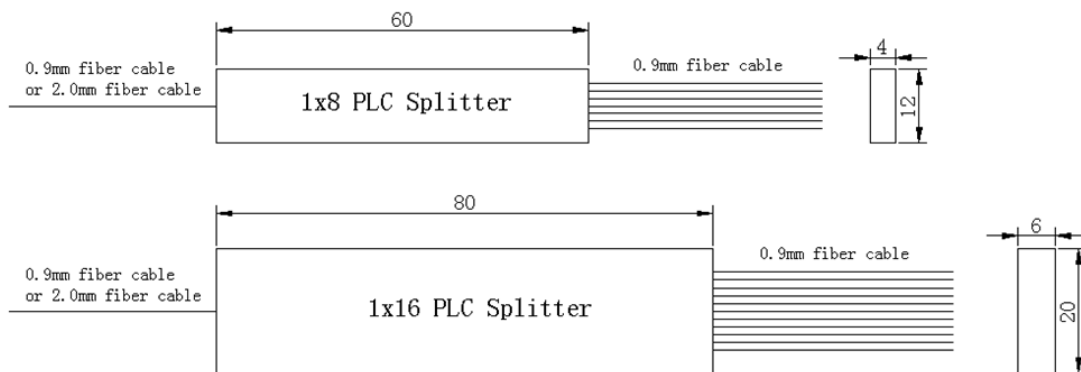
PDF	-XXX	-XX	-XX	-X
P=PLC Splitter D=Device F=Fan-out	Port number	Input fiber type	Input fiber length	Input connector
	102=1×2 202=2×2 ... 264=2×64	00=250um bare fiber 01=900um loose tube 02=900um tight tube	10=1.0m 12=1.2m 15=1.5m ...	No Connector SC/PC(UPC,APC) LC/PC(UPC,APC) FC/PC(UPC,APC) ST/PC(UPC,APC) C=Customized
-XX	-X	-XX	-XX	-XX
Between device and fan-out kit fiber type	Fan-out kit type	Output fiber type	Output fiber length	Output connector
00=250um bare fiber 01=250um ribbon fiber	1=12 core 0.9mm 2=12 core 2.0mm 3=12 core 3.0mm 4=24 core 0.9mm 5=24 core 2.0mm 6=24 core 3.0mm	00=900um loose tube 02=2mm cable 03=3mm cable	10=1.0m 12=1.2m 15=1.5m ...	No Connector SC/PC(UPC,APC) LC/PC(UPC,APC) FC/PC(UPC,APC) ST/PC(UPC,APC) Customized

PLC Splitter Mini Module



Package Dimensions

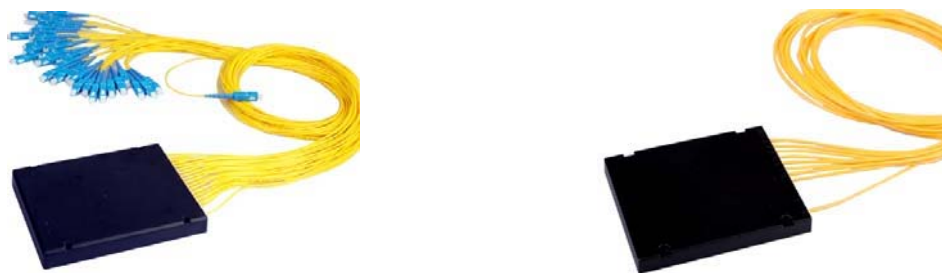
Port	1x2	2x2	1x4	2x4	1x8	2x8	1x16	2x16	1x32	2x32	1x64	2x64
WxHxL (mm)	4×4×50		4×7×60		4×12×60		4×12×60	6×20×80	6×20×80	6×20×80	6×40×100	6×40×100



Ordering Information

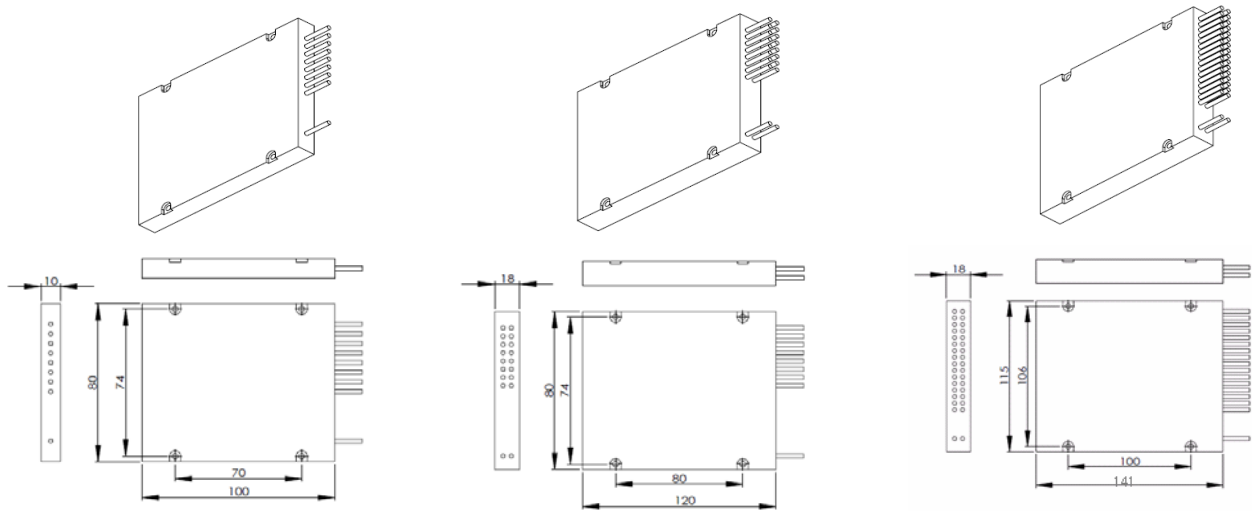
PMM	-XXX	-XX	-XX	-X	-XX	-X	-XX
	Port number	Input fiber type	Input fiber length	Input connector	Output fiber type	Output fiber length	Output connector
P=PLC Splitter M=Min M=Module	102=1x2 202=2x2 ... 264=2x64	00=900um loose tube 01=900um tight tube 02=2mm cable 03=3mm cable	10=1.0m 12=1.2m 15=1.5m ...	No Connector SC/PC(UPC,APC) LC/PC(UPC,APC) FC/PC(UPC,APC) ST/PC(UPC,APC) C=Customized	00=900um loose tube	10=1.0m 12=1.2m 15=1.5m ...	No Connector SC/PC(UPC,APC) LC/PC(UPC,APC) FC/PC(UPC,APC) ST/PC(UPC,APC) Customized

Pigtailed PLC Splitter Module



Package Dimensions

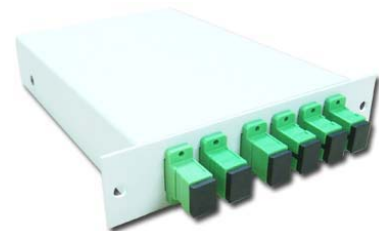
Port	1x2	2x2	1x4	2x4	1x8	2x8	1x16	2x16	1x32	2x32	1x64	2x64
WxHxL (mm)	100x80x10						120x80x18				141x114x18	



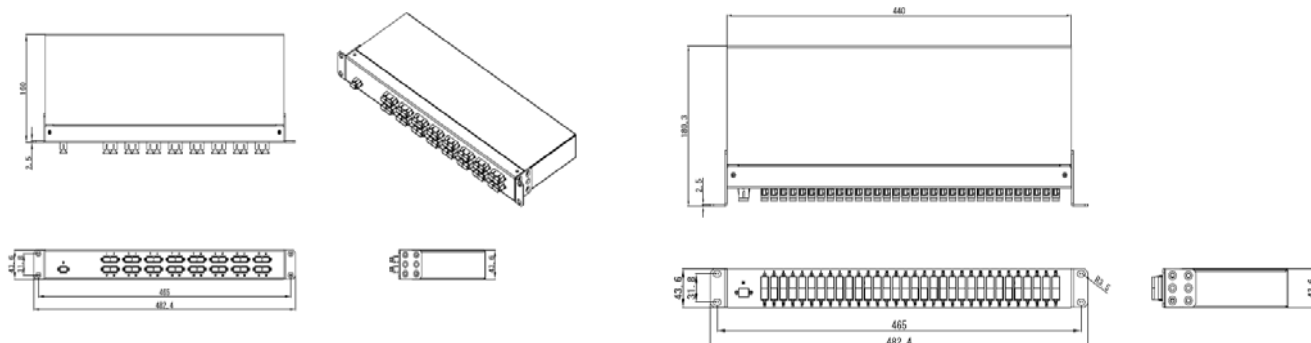
Ordering Information

PM	-XXX	-XX	-XX	-X	-XX	-X	-XX
	Port number	Input fiber type	Input fiber length	Input connector	Output fiber type	Output fiber length	Output connector
P=PLC Splitter M=Module	102=1×2 202=2×2 ... 264=2×64	00=900um loose tube 01=900um tight tube 02=2mm cable 03=3mm cable	10=1.0m 12=1.2m 15=1.5m ...	No Connector SC/PC(UPC,APC) LC/PC(UPC,APC) FC/PC(UPC,APC) ST/PC(UPC,APC) C=Customized	00=900um loose tube 02=2mm cable 03=3mm cable	10=1.0m 12=1.2m 15=1.5m ...	No Connector SC/PC(UPC,APC) LC/PC(UPC,APC) FC/PC(UPC,APC) ST/PC(UPC,APC) Customized

PLC Splitter Rackmount



Package Dimensions



1X32 PLC Splitter 19" 1U Rack mount

1X64 PLC Splitter 19" 2U Rack mount

Ordering Information

PR	-XXX	-XX	-XX	-X	-XX	-X	-XX
	Port number	Input fiber type	Input fiber length	Input connector	Output fiber type	Output fiber length	Output connector
P=PLC Splitter R=Rackmount	102=1×2 202=2×2 ... 264=2×64	00=900um loose tube 01=900um tight tube 02=2mm cable 03=3mm cable	10=1.0m 12=1.2m 15=1.5m ...	No Connector SC/PC(UPC,APC) LC/PC(UPC,APC) FC/PC(UPC,APC) ST/PC(UPC,APC) C=Customized	00=900um loose tube 02=2mm cable 03=3mm cable	10=1.0m 12=1.2m 15=1.5m ...	No Connector SC/PC(UPC,APC) LC/PC(UPC,APC) FC/PC(UPC,APC) ST/PC(UPC,APC) Customized

DYSFO

ShenZhen DYS Fiber optic Technology Co.,Ltd

Tel: 86-0755-29518585, 29650336 Fax : 86-0755-29510505 PC/ZIP: 518133

Add: 2/F, 7 Building, Tangtuo Industrial Zone 3rd, Shiyan Town, BaoAn District, Shenzhen, P.R China

