

# 10/100Mbps, Managed/Unmanaged, Standalone, Module, 2.5U 16-slot Chassis MODEL: RACK2000 SERIAL

## Overview:

10/100 Media Converter Chassis is a 10/100Base-TX fast Ethernet media converter with the function of auto negotiation and auto MDI/MDIX cable selection. This device translates transmission signals from a twisted-pair 10Base-T or 100Base-TX cable to 100Base-FX fiber optic cable. With intelligent SNMP-based network management, user can monitor and configure the Copper Port and Optical Port of center chassis and remote standalone easily, and helps network operators quickly isolate problems without visiting multiple wiring closets, avoiding expensive own time. Besides, user can control the bandwidth rate limiting as N\*32Kbps.

## Picture:



RACK2000C-A



RACK2000C-B

## Features:

### 1. Hardware Features

- Support 10Base-T, 100Base-TX, 100Base-FX
- Fully compatible with IEEE802.3, IEEE802.3u, IEEE802.3x standards
- Up to 120Km distance without any relay device
- High-performance auto-negotiation chips make sure the data transfer with higher security, stability and without block.
- Up to 1916 bytes package forwarded, transmit 802.1Q VLAN TAG protocol transparently
- Support half/full duplex mode Auto-negotiate
- All the modules support hot-swap function
- Single-strand/double-strand optical port selectable
- Chassis supports double redundant power supply modules and each power supply module supports up to 100 Watt power output for the security and stability
- Chassis support cascade Link up to 4 numbers for management, 4 chassis need only one IP address.

### 2. Software Function

#### 2.1. System

- Support Console, WEB and SNMP-based management
- Select the system or a single local module or remote end device to reset
- Reset chassis to factory default
- Support firmware updating, with the update tool and new version firmware file download from our website.
- Support SNMP management. Set Trap Destination, Community Name, and authority
- Provide MIB file, make it easy to be integrated into the third-party SNMP management software
- Tree-view structure makes it easy to manage many chassis from one software interface

#### 2.2. Monitor and Setting

- Show details of system information, including chassis name, location information, IP address, start-up time, software and hardware version

- View & configure the working status of local and remote device, including connection status, speed, half/full duplex mode, port status
- View the detailed information of power supply
- Set the speed(bandwidth) limitation of the Ethernet port from 0Mbps to 70Mbps with step of 32Kbps
- Support remote loop back function, three loop back positions selectable
- Summarize the data flow information and show the communication state of each port

2.3. Alarm

- Real-time Alarm can be added to a float window automatically or pop up to get more attention
- One history alarm message window for searching, deleting, copying etc.

2.4. Security

- 3 levels of the users to advance the security of the software system

**Specifications:**

1. Ethernet Port

- Compatible with IEEE 802.3 series Standards
- Speed: 10/100Mbps auto-negotiation
- Duplex: Half/full auto-negotiation
- Connectors: RJ45 Jack
- MDI/MDI-X crossover automatically

2. Optical Port

- Wavelength: 850nm/1310nm/1550nm
- Single mode/Multimode Optional
- Up to 120km transmission distance
- SC/PC, ST/PC and FC/PC optional

3. Power

- AC: 100V~240V, 50/60Hz
- DC: -48 VDC
- Consumption: Standalone < 3W

4. Size

- Standalone: 132mm (W) x 122mm (D) x 36mm (H)
- 19-inch Chassis: 440mm (W) x 250mm (D) x 125mm (H)

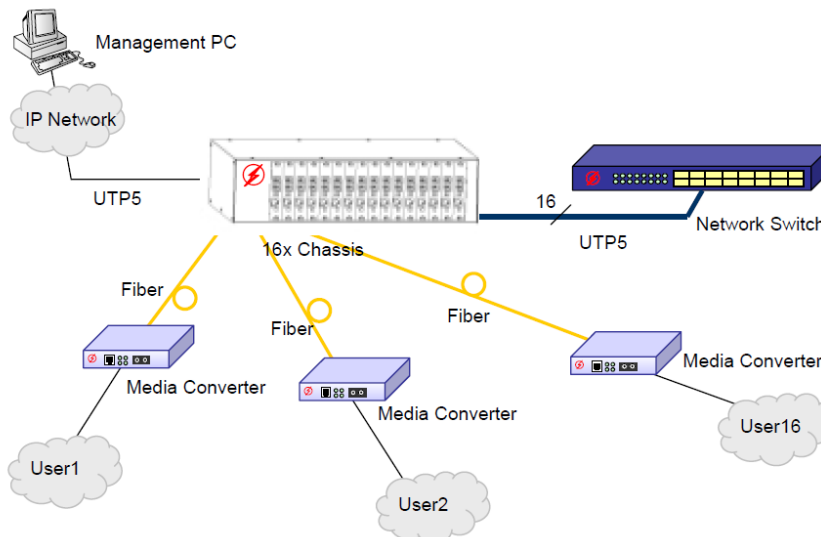
5. Environment

- Temperature: 5°C ~ 40°C;
- Humidity: 30% ~ 90% (25°C);

6. LEDs

- PWR, TLink, Flink, 100M

**Typical Application:**



**Information Order:**

**1. Model**

**DYS1100C** Serial Media Converter Card  
**RACK2000** Serial Media Converter Chassis

**2. Part Number of module Media Converter Card**

Type	Connector	Fiber type	Wavelength (Nm)	Max. distance	TX power (dBm)	Sensitivity	Link Budget
DYS1100C-SC-2	SC Duplex	Multi-mode	850	2Km	-13~-8	-30dBm	17dBm
DYS1100CS-SC-25	SC Duplex	Single-mode	1310	20km	-14~-8	-32dBm	18dBm
DYS1100CS-SC-40	SC Duplex	Single-mode	1310	40km	-8~-3	-33dBm	25dBm
DYS1100CS-SC-60	SC Duplex	Single-mode	1550	60km	--3~0	-36dBm	33dBm
DYS1100CS-SC-80	SC Duplex	Single-mode	1550	80km	-10~-5	-35dBm	25dBm
DYS1100CS-SC-100	SC Duplex	Single-mode	1550	100km	-5~0	-36dBm	31dBm
DYS1100CS-SC-120	SC Duplex	Single-mode	1550	120km	0~+3	-36dBm	36dBm
DYS1100CS-SC-25	SC Simplex	Single-mode	1310/1550	20km	-14~-8	-32dBm	18dBm
DYS1100CS-SC-40	SC Simplex	Single-mode	1310/1550	40km	-8~-3	-33dBm	25dBm
DYS1100CS-SC-60	SC Simplex	Single-mode	1490/1550	60km	--3~0	-36dBm	33dBm
DYS1100CS-SC-80	SC Simplex	Single-mode	1490/1550	80km	-10~-5	-35dBm	25dBm

**3. Part Number (P/N) of Chassis**

**RACK2000C-A/B-16** 16-slot chassis, support double redundant power supplies  
**DYS1100MC** Management Card of the chassis

**4. Part Number (P/N) of Chassis power supply module**

**PR-2000A** 16-slot chassis power supply module, AC 220V input, 100Watt output  
**PR-2000D** 16-slot chassis power supply module, DC -48V input, 100Watt output

# DYSFO

ShenZhen **DYS** Fiber optic Technology Co.,Ltd

Tel: 86-0755-29518585, 29650336 Fax : 86-0755-29510505 PC/ZIP: 518133

Addr: 2/F, 7 Building, Tangtou Industrial Zone 3rd, Shiyan Town, BaoAn District, Shenzhen, P.R China

