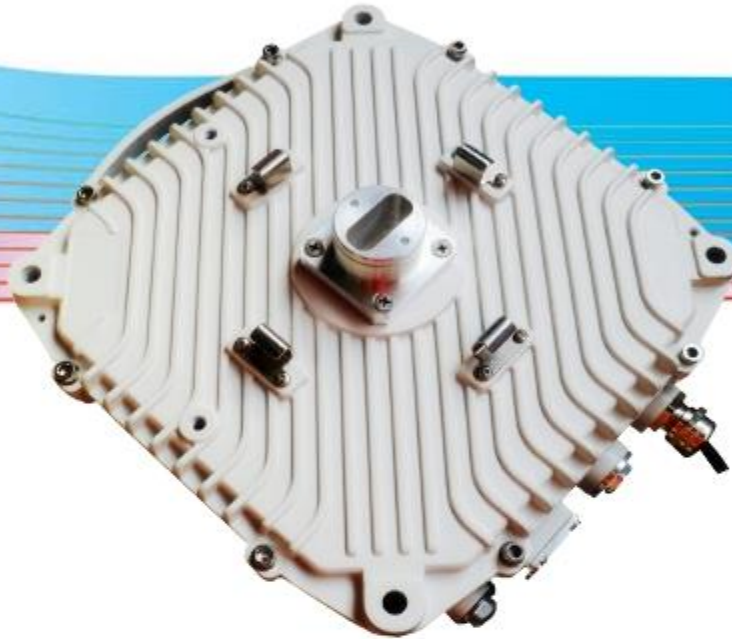


16MRO

Full-outdoor Packet Radio



Feature

- Zero footprint, fully integrated and cost-effective solution
- Up to 400Mbps capacity with Hitless Automatic Adaptive Coding and Modulation (HAACM)
- Network synchronization with SyncE
- QoS (Quality of Service) and VLAN for traffic prioritization
- Scalable bandwidths (3.5/7/14/28/56 MHz) and flexible modulation schemes (QPSK-1024QAM) to secure best link performance
- PoE- one single cable for both traffic and power, with optional Optical GE port
- High availability and reliability based on licensed frequencies from 6.5G to 23G
- Jumbo frame up to 9600 bytes, layer-2 switching, auto MDI/MDXI, VLAN, QoS, QinQ, STP/RSTP, RLS
- RF and digital loopback capability
- ATPC and built-in FEC function
- Built-in Bit Error Rate (BER) monitoring
- Small and attractive profile, Low latency and low power consumption, wide operating temperature range fits all weather conditions
- Local management capability as well as SNMP

Specification

Frequency	6.5 G Hz	7GHz	8GHz	11 GHz	13 GHz	15 GHz	18 GHz	23 GHz		
Standard	ETSI/ITU or customer specified									
RF Output Power (dBm-Max)	1024QAM	18	18	18	16	16	16	15	15	
	256QAM	20	20	20	18	18	18	17	17	
	64QAM	21	21	21	19	19	19	18	18	
	16QAM	23	23	23	21	21	21	20	20	
	QPSK	25	25	25	23	23	23	21	21	
RF Output Power (dBm- Min)	0									
Tuning Increment (dB)	1									
Accuracy (dB)	±2									
RX at BER=10-6 (dBm)	56MHz	512QAM	-59.5	-59.5	-59.5	-59.0	-59.0	-59.0	-58.6	-58.6
		256QAM	-62.5	-62.5	-62.5	-62.0	-62.0	-62.0	-61.6	-61.6
		64QAM	-68.5	-68.5	-68.5	-68.0	-68.0	-68.0	-67.6	-67.6
		QPSK	-80.8	-80.8	-80.8	-80.3	-80.3	-80.3	-79.7	-79.7
	28MHz	1024QAM	-57.9	-57.9	-57.9	-57.4	-57.4	-57.4	-57.0	-57.0
		256QAM	-65.4	-65.4	-65.4	-65.1	-65.1	-65.1	-64.7	-64.7
		64QAM	-71.5	-71.5	-71.5	-71.2	-71.2	-71.2	-70.8	-70.8
		QPSK	-83.7	-83.7	-83.7	-83.1	-83.1	-83.1	-82.7	-82.7
	14MHz	1024QAM	-61.1	-61.1	-61.1	-60.6	-60.6	-60.6	-60.2	-60.2
		256QAM	-67.9	-67.9	-67.9	-67.4	-67.4	-67.4	-67.0	-67.0
		64QAM	-73.3	-73.3	-73.3	-72.8	-72.8	-72.8	-72.4	-72.4
		QPSK	-86.1	-86.1	-86.1	-85.6	-85.6	-85.6	-85.2	-85.2
Flange	UBR84	UBR84	UBR84	UBR100	UBR140	UBR140	UBR220	UBR220	UBR220	
RSSI	Output voltage vs. RSL: 0~3V vs. -90~-20dBm									
RSL Accuracy	±2 dB									
Frequency Stability	±5ppm									
Frequency Source	Synthesizer									
Max Input Level Without Damage	0dBm									
Modulation	QPSK~1024QAM									
ACM switching	Hitless									
Throughput (single channel) /Mbps	Up to 400Mbps									
Protection	1+1/ Ring/Mesh with external switch									
Switch type	GE Layer 2				QoS			802.1p		
Max frame size	9600 bytes				QoS queuing			Yes		
MAC table	1k entries, auto learning & aging				VLAN support			802.1Q, QinQ		
Packet buffer	31kBB;non-blocking store & forward				Spanning tree protocol			802.1D-1998 STP&RSTP		
Flow control	802.3x				Synchronization			SyncE		
SNMP	SNMP traps, MIB,SNMP v1/v2c									

EMS	Web based HTTP, Telnet, FTP, SNMP
Ethernet Interface	Full-duplex or half-duplex electrical (RJ45) and optical GE (SFP)
NMS Interface	Ethernet RJ45 (in-band)
RSSI	BNC
Power	N-type female or PoE
Power Supply	-48V±20%
Power Consumption	<40W
Ambient Temperature	-35~ +55°C
Weight &Dimension (kg/mm)	6/315×265×130
Humidity	All weather
Elevation	15,000ft / 4572 m,IP67

