

H5001

Multi-Functional Integrated Service Multiplexer



➤ Overview

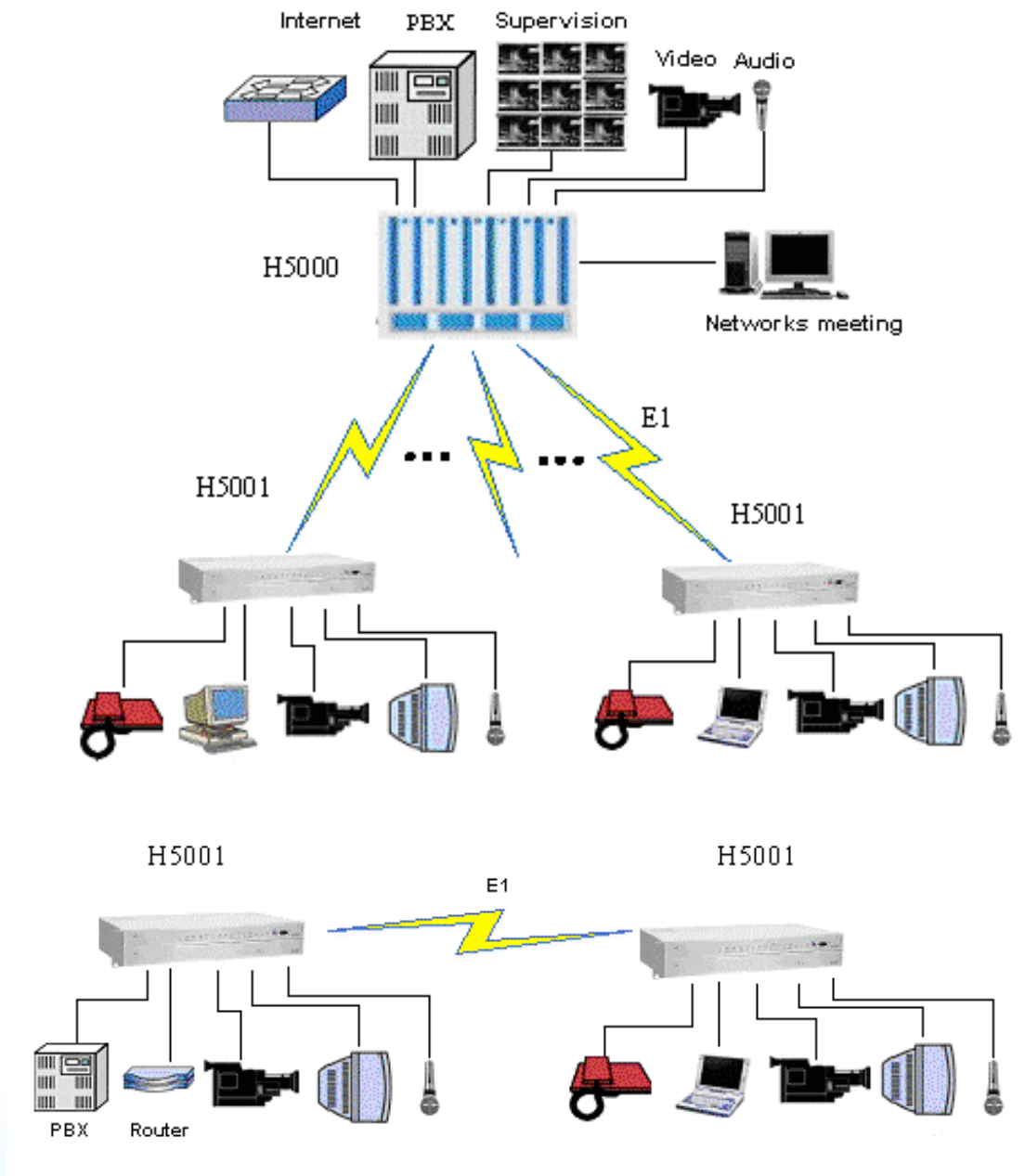
H5001 is a subscriber side equipment as the miniaturization equipment of H5000. H5001 can connect to H5000, also can connect to H5001 in a point-to-point link. It's have 4 minislots for voice/data (low speed) and 1 slot for FE data. 1U height.

H5001 has eight voice interfaces or low rate data, two N×64 kbps V.35 data interfaces, and two 100Bases-Tx Ethernet ports. It has many interfaces: such as FXO, FXS, 64Kbps codirectional data interface (G.703), asynchronous data interface (RS232, RS485), hot line interface, magneto interface, 2/4-wire voice interface, N×64 kbps V.35 data interface, E&M signalling interface.

➤ Features

1. Integrates audio, data and video in one system.
2. All the interfaces comply with the international standard.
3. Various service interface, including: E1, 10/100Base-Tx, V.35, Audio and Video, 64Kbps, V.35(N×64K), RS232/RS485, FXO/FXS, magnet telephone, hot line telephone, E&M etc.
6. Unified H7GMSW network management platform, managing and configuring easily. With perfect supervision and test function, remote-end manageable.
7. Flexible video configuration, MPEGII and MPEGIV mode can be configured by software.
8. Max capacity of H5000 is 4*2M, max voice capacity 16 channels. and 2 channels Ethernet service (or V.35 service).
14. The power supply card and cross connection card support 1+1 redundancy with high reliability.

Typical Application



Technical Specifications

Item	Description	
H5001 High-end Integrated Service Multiplexer	1U Compact Design with module	
Module type	CHU module	Support up to 16 voice channels
	Data module	V35 data module 10/100 Base-T module Wideband ETH*E1 module
NMS interface	Network management system interface	RS232 or RS485 Ethernet (SNMP)
Video	Video rate	128K-8M bps
	Video output mode	Fixed rate or variable rate
	PAL/NTSC	both supports
	PAL mode	720*576, 704*576, 640*576, 480*576, 352*576, 352*288, 176*144
	NISC mode	720*480, 704*480, 640*480, 480*480, 352*240, 352*480, 176*144
	Video output mode	TS/PS
	Code	ISO/IEC-14496-2 MPEG-4 SP@L1, L2 and L3 ISO/IEC-13818-2 MPEG-2 MP@ML
Audio	Audio sampling frequency	8K, 32K, 44.1K, 48KHz
	Coding mode	MPEG1 Audio Layer I/II, G.729, G.711, MP3
	Rate	8K,32K, 64K, 192K, 224K, 384K bps
	Audio mode	Stereo, Joint, Dual, Mono
DC-48V or AC 220V <20W		
W×H×D (mm) 440×44×209		